

Moisture measurement solutions

For on-line quality and control applications



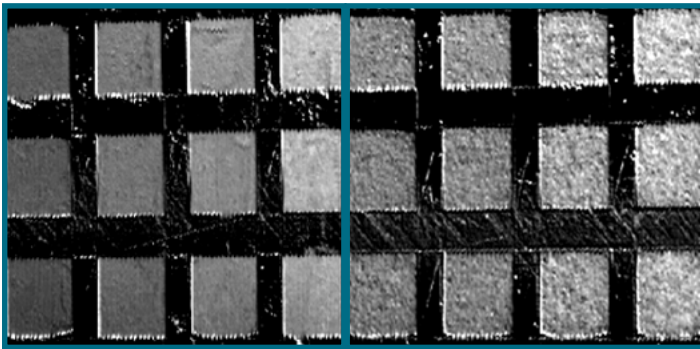
ALPhA **NOV**

Optics & Lasers Technology Center

Moisture measurement solutions

For on-line quality and control applications

Innovative technological building blocks have been integrated in optoelectrical systems and assessed for typical on-line moisture measurement applications.



Processed cartographies obtained with the scanner on ground coffee (left) and on sawdust (right) (decreasing moisture content from left to right). Dimension of each small box is 40 x 40 mm².

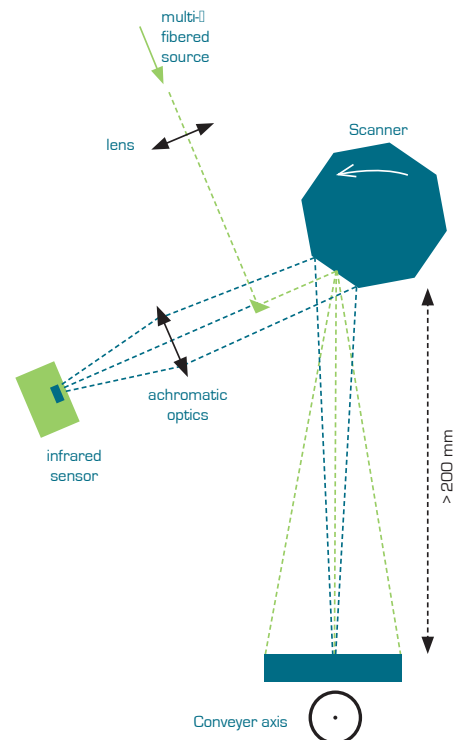
[coming publication]

Features:

- Embeds smart and flexible multispectral fibered SWIR sources
- Operation wavelengths to be chosen in the range 1000-1600 nm
- Multispectral imaging mode for transparent materials or parts inspection
- 2D mapping mode for diffuse materials quality control on conveyer belts
- Adjustable working distance (from 200 mm)
- Adaptable for various process control and sorting applications in the visible, NIR or SWIR spectral ranges

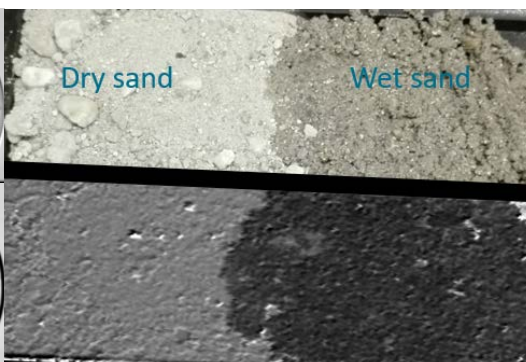
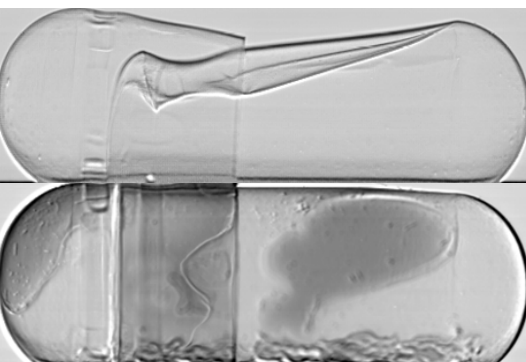
Two sensors for multispectral sensing have been designed for process control applications: one is based on imaging technology with SWIR laser illumination, the other is based on scanner coupled with specific multi-SLEDs fibered source.

Scanner principle



Principle of SWIR multispectral scanner for web surfaces inspection and composition monitoring.

Technical Specifications



Example of SWIR images of transparent pharmaceutical caps. High-moisture area in dark grey.

2D moisture mapping with SWIR multispectral scanner. High moisture level in dark grey.

SWIR multispectral fibered source for process control, inspection and sorting applications.

Multispectral imaging device

	Min	Max
Spectral range	1000 nm	1600 nm
Working distance	200 mm	Application dependent
FOV	-	
Spatial resolution	200 μm	1000 μm
Moisture content range*	10 %	40 %
Absolute moisture level accuracy*	+/- 1 %	+/- 2 %
Typical dimensions	300 x 300 x 100 mm	

Multispectral scanner

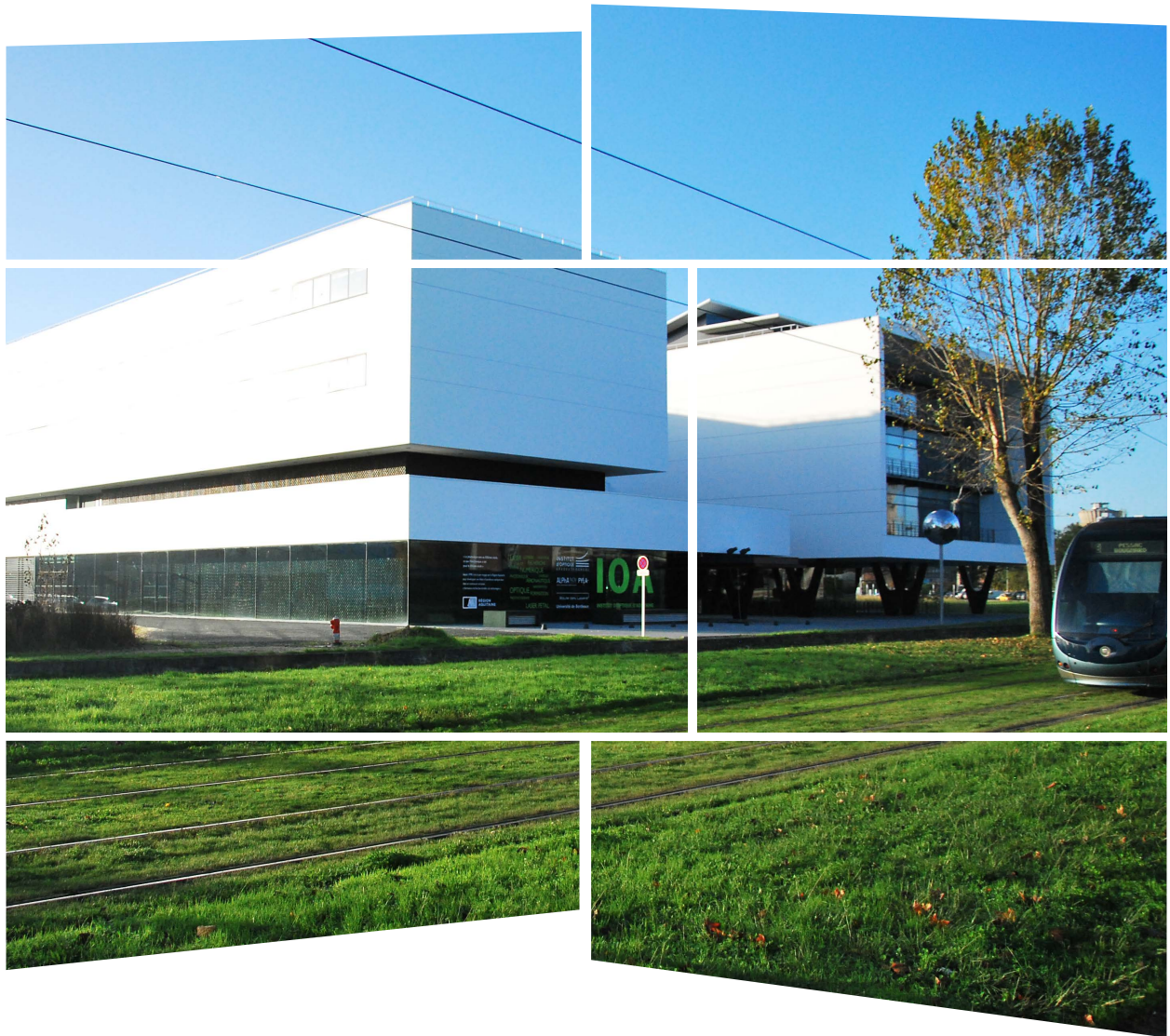
	Min	Max
Spectral range	1000 nm	1600 nm
Working distance	200 mm	Depends on source power
FOV	+/- 35°	
Spatial resolution	Millimetric range	
Moisture content range*	10 %	40 %
Moisture level accuracy*	<10 % rel.	
Typical dimensions	450 x 300 x 150 mm	

* Typical values for moisture measurement application using moderate absorption bands, these values are usually very specific to each application.

The Pharmsense project, in collaboration with PRODITEC and the EDIT laser, was funded by BPI France

ALPhA NOV

Optics & Lasers Technology Center



Institut d'optique d'Aquitaine
Rue François Mitterrand
33400 Talence - France

Ph. +33 (0)5 24 54 52 00

www.alphanov.com