



TOMBAK

Pulse Delay Generator
Digital Delay Generator

Pulse Picker

Voltage Converter

Arbitrary Waveform Generator

User Manual







Global Introduction

The Pulse-Delay Generator is a very versatile module, it provides many settings to realize a large set of functions, from the simplest to the very advanced ones:

It can be used as:

- A basic Pulse Generator : see “Using TOMBAK as a standalone generator” section 3.1 (p22).
- A Digital Delay Generator : see “Using TOMBAK as a Digital Delay Generator” section 3.2 (p27).
- A burst generator : see “Using Tombak as a burst generator” section 3.3 (p32).
- A signal gating module : see “Using the Gate feature of TOMBAK” section 3.4 (p37)
- A Synchronization module : see “Using TOMBAK as a signal synchronization modulePulse-Picker” section 3.5 (p42)
- A voltage level convertor : see “Using TOMBAK as a Voltage Level Converter” section 3.6 (p47)
- A frequency divider : see “Using TOMBAK as a frequency divider” section 3.7 (p52)
- A Pulse-picker : see “Using Tombak as a Pulse-Picker” – section xxxx
- An AWG (user manual improvement coming soon)



Revision Sheet

Release No.	Date	Revision Description
v1.0	27/04/17	First version
v1.1	07/12/2017	Add Hardware setup and divider example configuration
v1.2	24/01/2018	Updated the list of instructions (§ 4.2.1)
v1.3	26/02/2018	Add Multiple channel section
v1.4	14/10/2019	Corrected several documentation errors in Remote Communication consigns
V1.5	26/10/2019	Several modifications for 3 product versions (Tombak/DDG/Pulse-picker) – correction of bad pictures for Voltage converter etc.

Disclaimer

Information in this document is subject to change without notice.

Copyright © ALPhANOV – Optical and Laser Technological Center

Bât. IOA, rue François Mitterrand - 33400 Talence – France

SIRET 493 635 817 00031 - N° TVA intracommunautaire : FR 24493635817

Phone: +33 (0)5 24 54 52 00 – Fax +33 (0)5 40 00 64 07 – info@alphanov.com – www.alphanov.com

Fax: (408) 744-9049

www.alphanov.com



TABLE OF CONTENTS

<i>Global Introduction</i>	3
<i>Revision Sheet</i>	4
1.0 GENERAL INFORMATIONS	8
1.1 Package Content	8
1.2 Safety Instructions	8
1.2.1 Wiring	8
1.2.2 Operating environment	8
1.3 Contact	8
2.0 System summary	10
2.1 Front-Panel overview	10
2.1.1 Power and Communications Connectors	10
2.1.2 SMA Output and Input Connectors	10
2.1.3 KK Connectors	11
2.2 System Setup	12
2.2.1 Power	12
2.2.2 USB	12
2.2.3 Tools Installation (Windows)	12
2.3 Hardware Setup	15
2.3.1 “Pulse Out” voltage output level.....	15
2.3.2 “Shape Out” voltage output level	15
2.4 Global Architecture	16
2.5 Multi-channel module – Stacked TOMBAK	16
2.6 Front-Panel User Interface	18
2.6.1 Overview	18
2.6.2 Working Mode.....	18
2.6.3 Input Pulse	19
2.6.4 Output Pulse.....	20
2.6.5 Synchro Input.....	20
2.6.6 Synchro Output.....	21
3.0 Configuration Example	22
3.1 Using TOMBAK as a standalone generator	22
3.1.1 Presentation.....	22
3.1.2 Timing diagram	22
3.1.3 Synoptic	22
3.1.4 Cabling.....	23
3.1.5 Software configuration	23
3.1.6 Main features	26
3.2 Using TOMBAK as a Digital Delay Generator	27
3.2.1 Presentation.....	27
3.2.2 Timing diagram	27
3.2.3 Synoptic	28
3.2.4 Cabling.....	28
3.2.5 Software configuration	28



3.2.6	Main features	31
3.3	Using Tombak as a burst generator.....	32
3.3.1	Presentation.....	32
3.3.2	Timing diagram	32
3.3.3	Synoptic	32
3.3.4	Cabling.....	33
3.3.5	Software configuration	33
3.3.6	Main features	36
3.4	Using the Gate feature of TOMBAK	37
3.4.1	Presentation.....	37
3.4.2	Timing diagram	37
3.4.1	Synoptic	37
3.4.2	Cabling.....	38
3.4.3	Software configuration	38
3.4.4	Main features	41
3.5	Using TOMBAK as a signal synchronization module.....	42
3.5.1	Presentation.....	42
3.5.2	Timing diagram	42
3.5.1	Synoptic	42
3.5.2	Cabling.....	43
3.5.3	Software configuration	43
3.5.4	Main features	46
3.6	Using TOMBAK as a Voltage Level Converter	47
3.6.1	Presentation.....	47
3.6.2	Timing diagram	47
3.6.3	Synoptic	47
3.6.4	Cabling.....	48
3.6.5	Software configuration	48
3.6.6	Main features	51
3.7	Using TOMBAK as a frequency divider	52
3.7.1	Presentation.....	52
3.7.2	Timing diagram	52
3.7.3	Synoptic	52
3.7.4	Cabling.....	53
3.7.5	Software configuration	53
3.7.6	Main features	56
3.8	Using TOMBAK as a PULSE-PICKER.....	57
3.8.1	Introduction / Overview.....	57
3.8.2	Timing diagrams.....	57
3.9	Using TOMBAK as an AWG (Arbitrary Waveform Generator)	58
4.0	REMOTE COMMUNICATION.....	59
4.1	Protocol Description	59
4.1.1	Getting started: configure UART.....	59
4.1.2	Protocol.....	59
4.1.3	Messaging	61
4.2	List of Instructions and measures	65
4.2.1	Instructions	65
4.2.2	Measures	66
4.3	Example.....	67



1.0 GENERAL INFORMATIONS

1.1 Package Content

The Pulse Delay Generator package comes with:

- 1 TOMBAK board
- 1 DC Power Supply (+5V / 2A)
- 1 USB-Jack FTDI cable
- 1 CD-ROM or USB Key with “ALPhANOV Control Software Suite”
- 1 User Manual



Figure 1 Package Content

1.2 Safety Instructions

1.2.1 Wiring

- Please first connect the input pins to the board and then plug the DC Power Supply.
- Use caution when connecting the Power Supply.
- Protect the power cord from being walked on or pinched particularly at plugs, convenience receptacles, and the point where they exit from Tombak.
- Connect the ground completely. Electric shock may occur if the ground is not connected correctly.

1.2.2 Operating environment

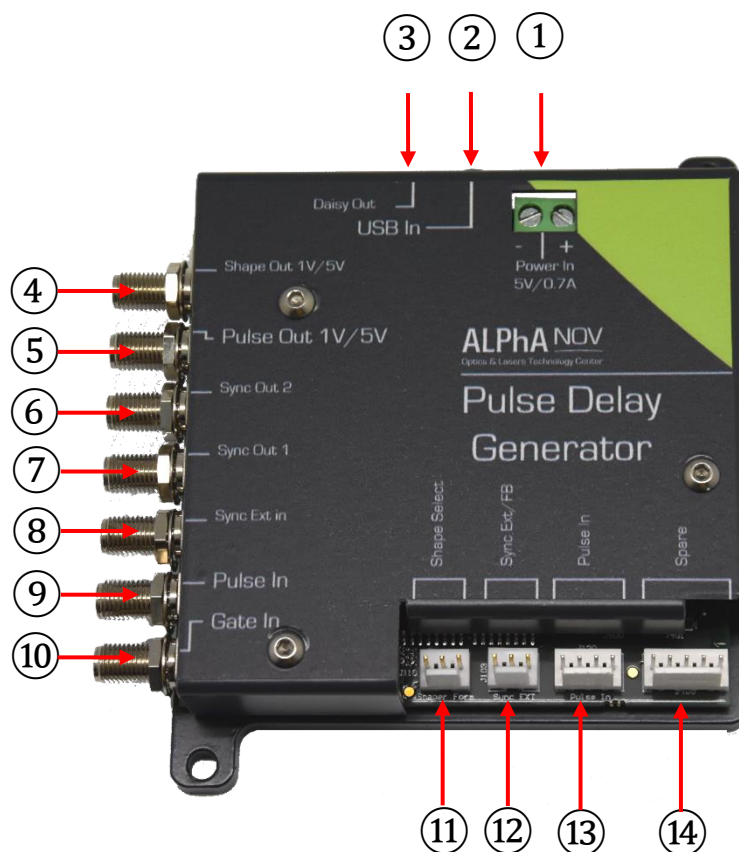
- Do not install near any heat sources such as radiators, heat registers, stoves, or other equipment (including amplifiers) that produce heat.
- To reduce the risk of fire or electric shock, do not expose Tombak to rain or moisture.

1.3 Contact

If you have any question about Tombak module, please contact ALPhANOV at info@alphanov.com.

2.0 SYSTEM SUMMARY

2.1 Front-Panel overview



2.1.1 Power and Communications Connectors

- ① - Power connector (5V / 0.7A)
- ② - Input Communication Connector
- ③ - Output Communication Connector

2.1.2 SMA Output and Input Connectors

- ④ - Analogic Output Signal (*Shaper*)
- ⑤ - Digital Pulse Output Signal (*Pulse Out*)
- ⑥ - Synchronization Output Signal 2 (*Sync Out 2*)
- ⑦ - Synchronization Output Signal 1 (*Sync Out 1*)

⑧ - External Synchronization Input Signal (*Sync Ext In*)

⑨ - Digital Pulse Input Signal (*Pulse In*)

⑩ - External Gate Signal Input (*Gate Ext*)

2.1.3 KK Connectors

⑪ - Shape Selection Connector

⑫ - External Synchronization Connector

⑬ - Analogic Pulse Input Connector

⑭ - Spare Connectors (*Factory use only*)

2.2 System Setup

2.2.1 Power

To power Tombak module, please use the DC Power adapter provided.

First plug the cables into the power connector (①) of the module. Red cable in ‘+’ and black cable in ‘-’ (*polarity is indicated on the product*).

You can then plug the DC Power Adapter to a plug socket.

2.2.2 USB

To communicate with Tombak module, please use included USB → Jack cable provided.

First connect the jack part into Input Communication Connector (②) of the module.

Please install software and pilots before plugging USB cable to computer. See section below

2.2.3 Tools Installation (Windows)

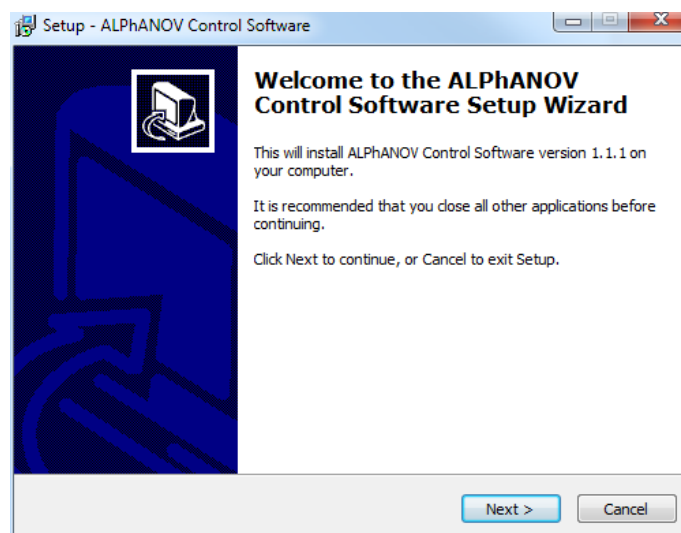
TOMBAK boards works along “ALPhANOV Control Software”: this software is unique and compatible with all ALPhANOV electronic modules and boards.

2.2.3.1 Software installation

Insert CD-ROM or USB Key provided with the module. Then open an Explorer windows and navigate into “Computer” part. You will either see a CR-ROM or USB Key with “ALPhANOV” title, open it.

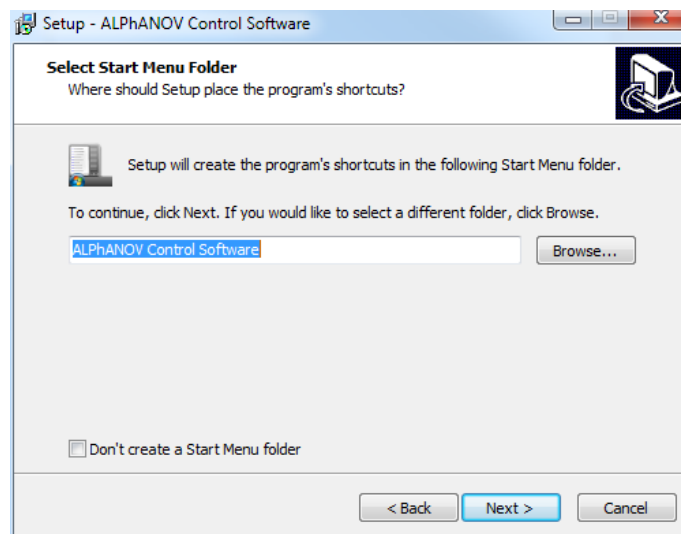
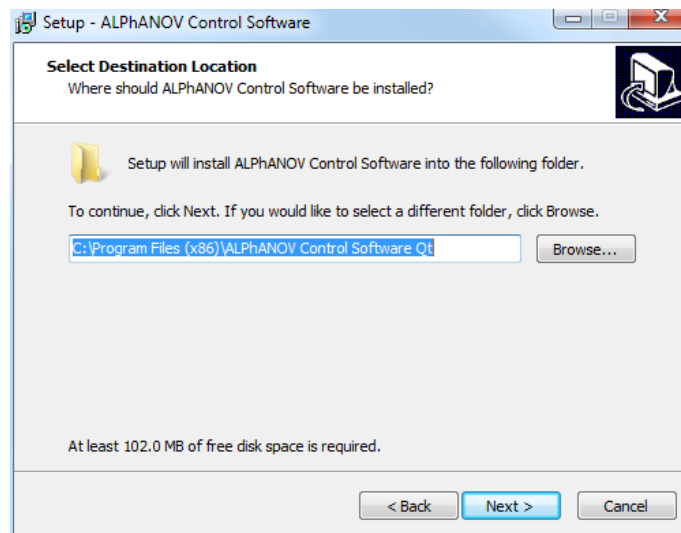
Double click on ControlSoftware_x_x_xx.exe file name.

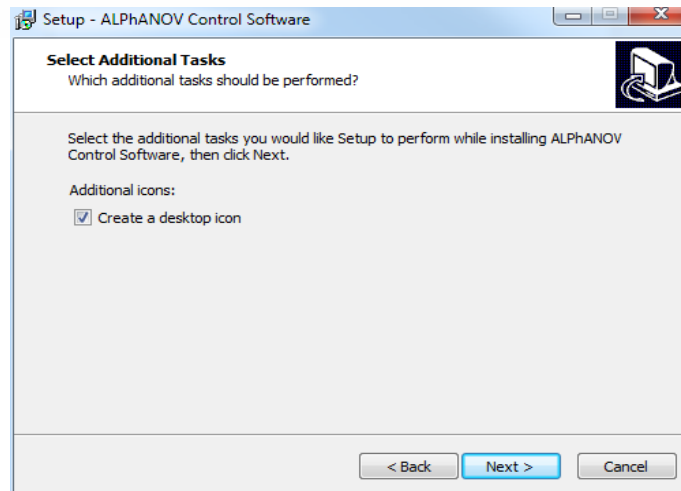
The following window will show:



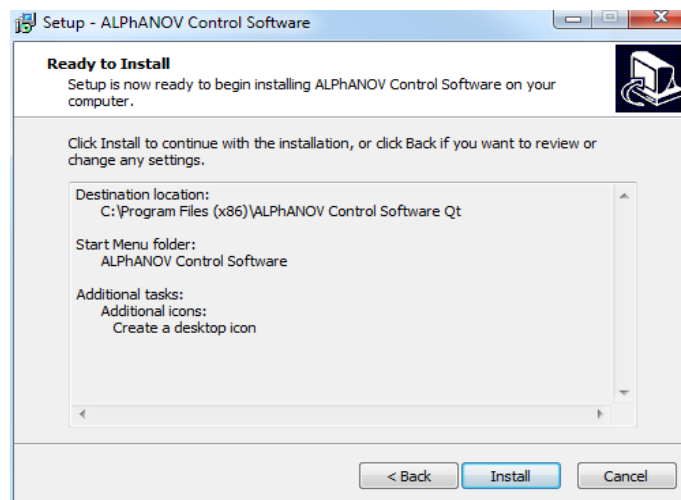
Click on Next;

In the following windows, choose a specific installation path or leave default. Then, go to the next section

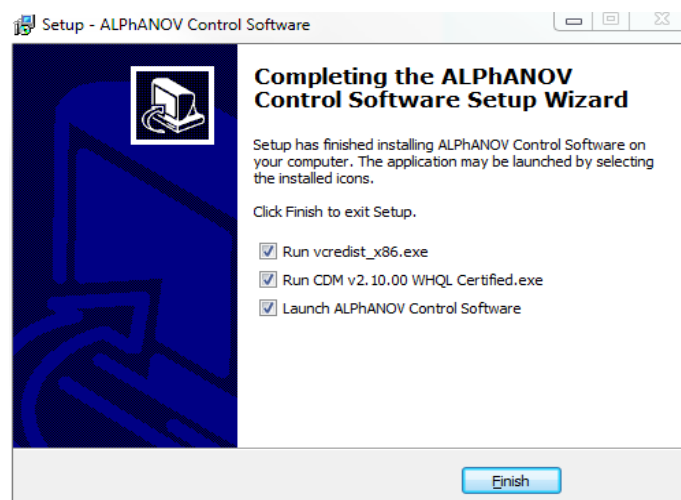




Finally click on the Install button.



Installation of the software is now completed. To install drivers & tools please let all the box checked and click on “Finish”. You can now move to next section “Driver installation”.



2.2.3.2 Driver installation

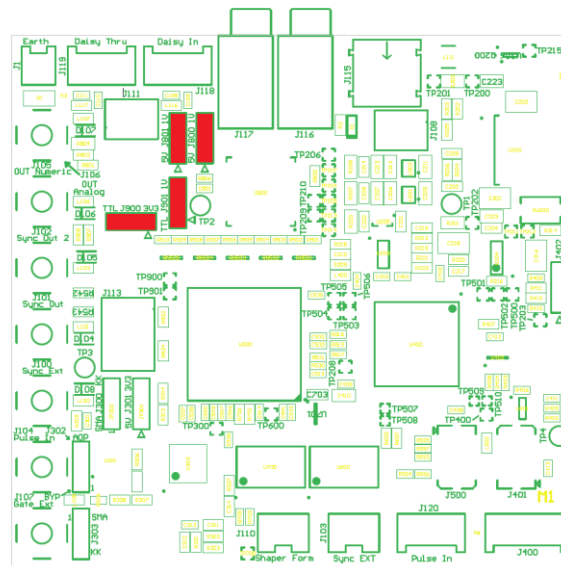
The driver installation runs through 2 parts:

- Microsoft Runtime installation
- USB Driver installation

No specific indication here, just click on “Next” and “Install” dialogs and wait until installations are finished.

2.3 Hardware Setup

Tombak module provides some hardware setup to adjust output voltage level by moving jumpers on electronic board.



 Jumper

Pin number 1 is indicated on electronic board by the symbol «▷» or by the indicator «1».

2.3.1 “Pulse Out” voltage output level

Voltage level can be adjusted according to the following configuration:

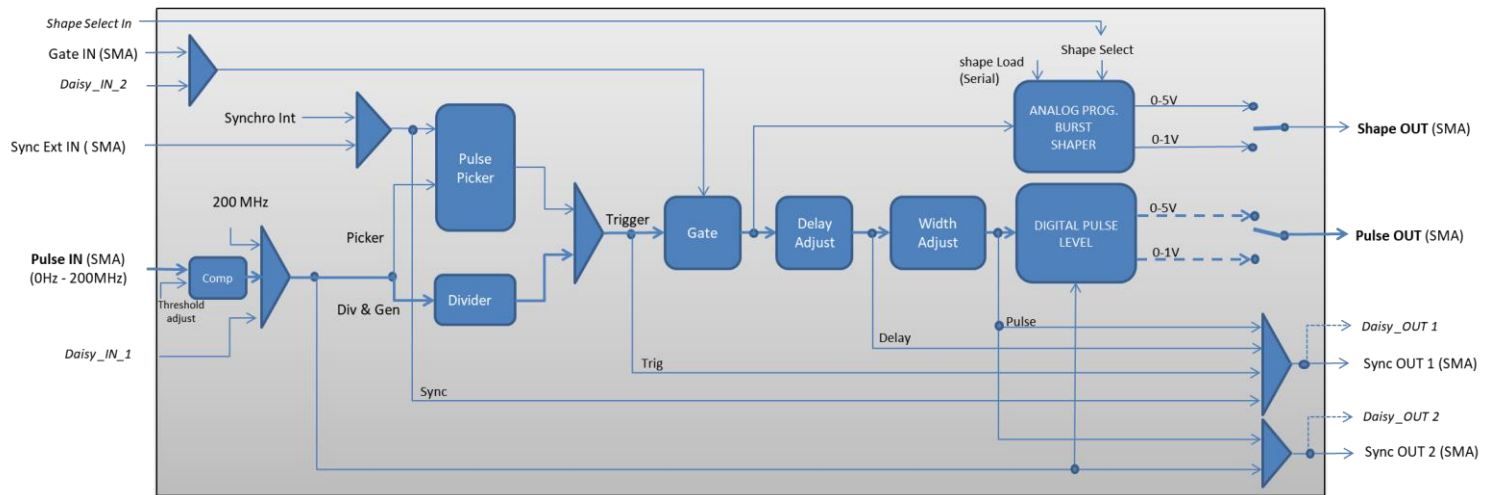
- 1V : Jumper **J901** in position **2-3**
- 3,3V : Jumper **J901** in position **1-2** et **J900** in position **1-2**
- TTL : Jumper **J901** in position **1-2** et **J900** in position **2-3**

2.3.2 “Shape Out” voltage output level

Voltage level can be adjusted according to the following configuration:

- 1V : Jumper **J800** in position **2-3** et **J801** in position **2-3**
- 5V : Jumper **J800** in position **1-2** et **J801** in position **1-2**

2.4 Global Architecture



2.5 Multi-channel module – Stacked TOMBAK

TOMBAK can be delivered in multi-channel version with multiple board stacked in a compact module.

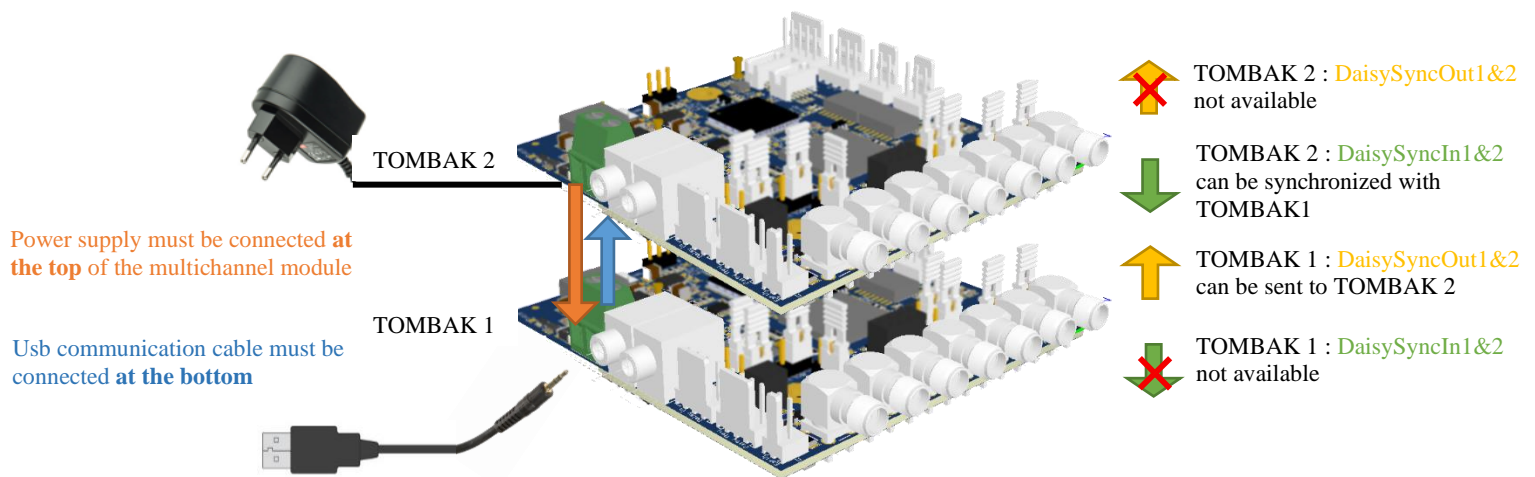


This option allows the user to access multiple output signal while sharing the same power source, the same communication bus and some internal signals between stacked board. For example, output signal from first board can be sent to the second board without any cable thanks to the internal “daisy connector”.

The shared features available in stacked module are:

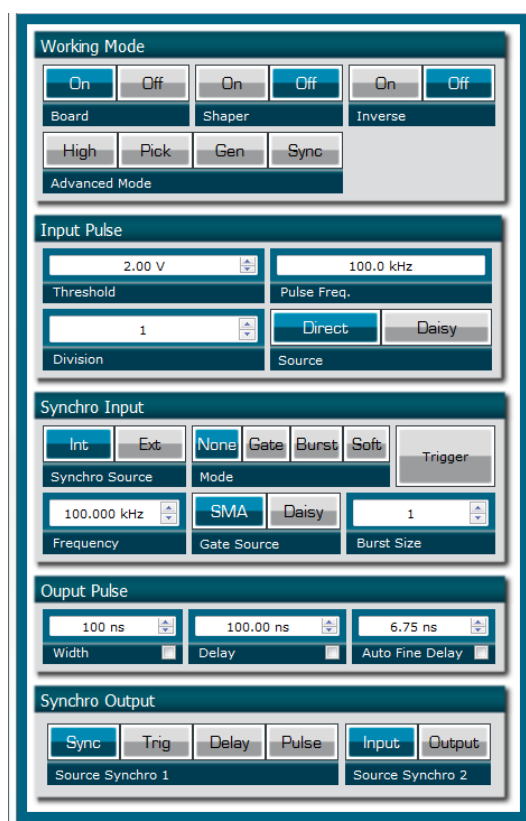
- **Power:** A single power source is needed and should be connected at the top
- **Usb Communication cable:** A single USB to Jack cable is needed to access all features of the multi-channel module and should be connected at the bottom.
- **Synchronization signals:**
 - **SyncOut1 & SyncOut2:** Synchronization output signals can support multiple signals such as output pulse, delayed pulsed, internal trigger (see 2.4. Global Architecture diagram) ... These outputs can be synchronized only with the **next upper board**.
 - **DaisyIn1:** Synchronization input signal that can be used as fundamental input signal (same as “Pulse In” from SMA, see 2.4. Global Architecture diagram). This input can be synchronized only **with the board above**.
 - **DaisyIn2:** Synchronization input signal that can be used as gate or burst trigger signal (same as “Gate In” from SMA, see 2.4. Global Architecture diagram). This input can be synchronized only **with the board above**.

For any other combination of signals between stacked board, user can still use SMA cable between the modules.



2.6 Front-Panel User Interface

2.6.1 Overview



2.6.2 Working Mode

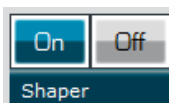
2.6.2.1 Board



This button is the global enable switch of the module

- In ON position, every feature and signal of the board will be active.
- IN OFF position, the board will be in standby mode and output signals will be inactive.

2.6.2.2 Shaper



This button is the Analogic Output Signal (*Shaper*) enable switch

- In ON position, an AWG signal can be output on SHAPE OUT SMA Connector.
- IN OFF position, the AWG signal will be at its default value.

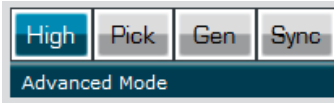
2.6.2.3 Inverse



This button is the Digital Output Signal (*Pulse Out*) inverter switch

- In ON position, the digital output signal on PULSE OUT SMA connector will be logically inverted.
- IN OFF position, it will be at its normal state.

2.6.2.4 Advanced Mode

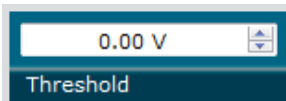


This button is the Advanced mode selection switch

- In *HIGH* position, the digital output signal will be continuous at its high level.
- In *PICK* position, the board is set in Picking & Synchronisation Mode: the digital *PULSE OUT* signal is synchronized with *PULSE IN*. In this advanced mode, an external or internally generated signal can be synchronized with *PULSE IN* signal. Delay and pulse width regarding *PULSE IN* are software adjustable.
- In *Gen* position, the board is a 20MHz standalone generator.
- In *Sync* position, *PULSE OUT* is synchronized with *PULSE IN* and voltage level may be upgrade.

2.6.3 Input Pulse

2.6.3.1 Threshold



This setting is the trigger level on Digital Input Signal (*Pulse In*)

- It should be adjusted so that the frequency read on *Pulse Freq.* box is correct.

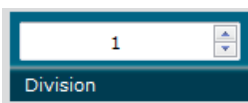
2.6.3.2 Pulse Freq.



This display box shows a frequency measurement value on Digital Input Signal (*Pulse In*)

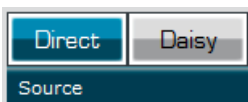
- *Threshold* setting has to be adjusted to get the correct value in this box.

2.6.3.3 Division



This setting allows to divide frequency of Digital Input Signal (*Pulse In*)

2.6.3.4 Source



This setting allows to choose Digital Input Signal (*Pulse In*) source

- In *Direct* position, the signal input is taken from SMA connector.
- In *Daisy* position, the signal input is taken from another *TOMBAK* module chained. (*Multi-output configuration option*).

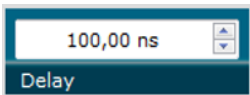
2.6.4 Output Pulse

2.6.4.1 Width



This setting allows to modify Digital Output Signal (*Pulse Out*) pulse width

2.6.4.2 Delay



This setting allows to modify Digital Output Signal (*Pulse Out*) delay

2.6.4.3 Fine Delay

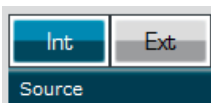


This special feature allows to fine adjust the Digital Output Signal (*Pulse Out*) delay up to 10ps

- In Auto mode, the board automatically adjust delay from Delay Box value
- In Manual mode, user can adjust manually delay with 10ps resolution

2.6.5 Synchro Input

2.6.5.1 Source



This button allows to select signal source to synchronize with PULSE IN

- In INT position, signal source is selected from an internal frequency generator. Value can be adjusted with Frequency box.
- In EXT position, signal source is selected from external source (SYNC EXT Input Signal). Frequency is shown in Frequency box.

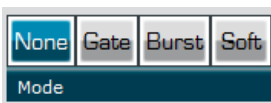
2.6.5.2 Frequency



This button allows to set or visualize synchronization signal frequency

- When Source button is set to INT: allows to set frequency.
- When Source button is set to EXT: shows a measure of external frequency.

2.6.5.3 Mode



This button allows to choose internal gating mode

- When Mode button is set to None: the Digital Output Signal will remain unchanged.
- When Mode button is set to Gate, Digital Output Signal will be enabled when External Gate Input Signal is at high level, if this External Gate Input is at low level, no signal will be emitted from Digital Output Signal.
- When Mode button is set to Burst: a number of pulse from the Digital Input Signal will be emitted to Digital Output Signal when a rising edge occurs on External Gate Input Signal. The number of pulses emitted can be set using Burst Size box.

- When Mode button is set to Soft: a number of pulse from the Digital Input Signal will be emitted to Digital Output Signal when clicking on Trigger button. The number of pulses emitted can be set using Burst Size box.

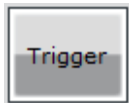
2.6.5.4 Burst Size



This button allows to change the number of pulses emitted in a burst

- This box is only accessible when Mode box is set to Burst of Soft mode.

2.6.5.5 Trigger

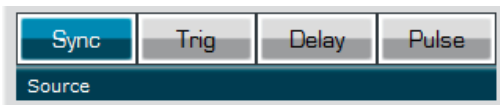


This button allows to trigger a burst manually

- This box is only accessible when Mode box is set to Soft mode.

2.6.6 Synchro Output

2.6.6.1 Source



This button allows to select output synchronization source

- Depending on what output synchronization source is selected, signal emitted from Synchronization Output Signal 1 will be different. (see 2.4. Global Architecture diagram for more information for more information) :
 - *Sync* : the input synchronization signal
 - *Trig* : the signal that triggers the pulse
 - *Delay* : the signal that triggers the pulse after being delayed
 - *Pulse* : the output pulse (same as PulseOut)

3.0 CONFIGURATION EXAMPLE

3.1 Using TOMBAK as a standalone generator

3.1.1 Presentation

An internal 200MHz generator is available and does not need any external signal. The board can output an external signal up to 20MHz with adjustable pulse width.

3.1.2 Timing diagram

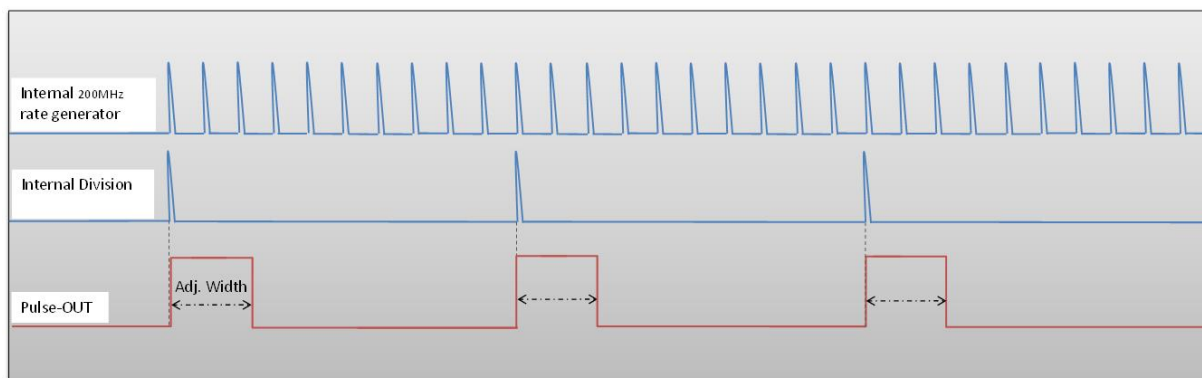


Figure 2: internal 200MHz clock divided by 10 to get a duty cycle software adjustable 20MHz output signal

3.1.3 Synoptic

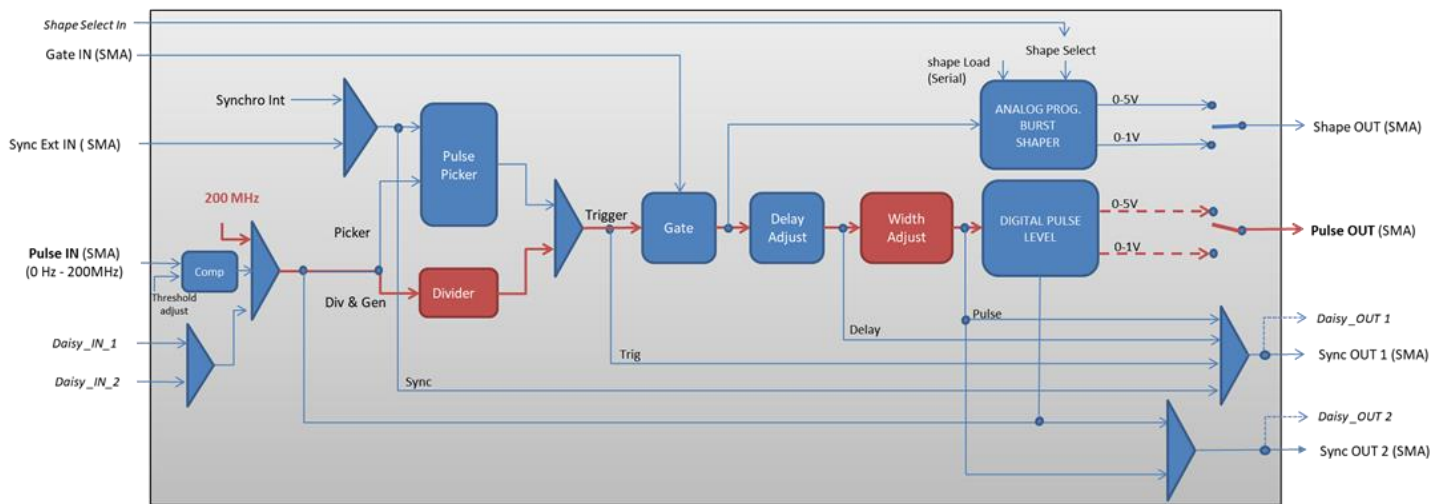
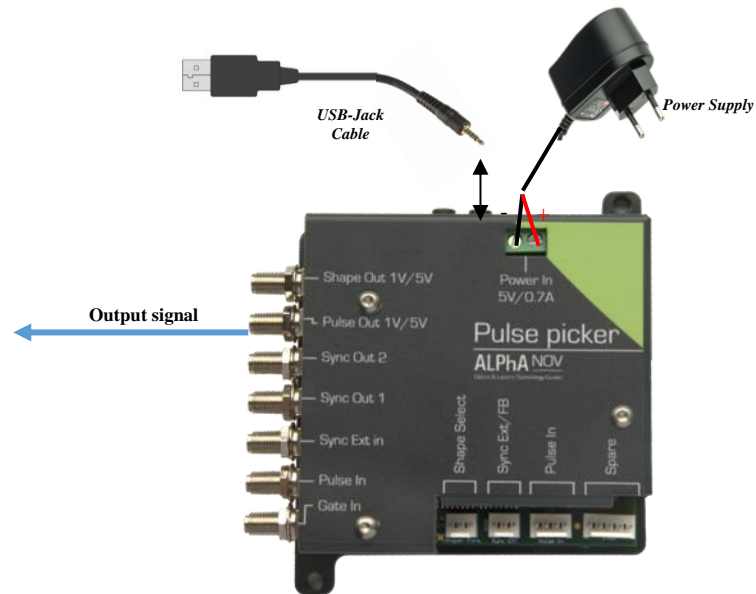


Figure 3 : Main firmware features used in Delay Generator

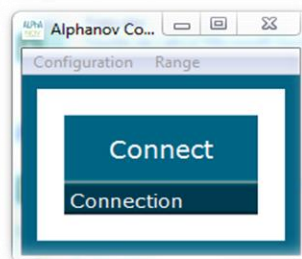
3.1.4 Cabling

1. Plug the USB-Jack cable in the “*USB In*” connector
2. The software adjustable signal will output on the “*Pulse Out*” SMA connector
3. Finally, plug the power supply to the “*Power In*” connector to power on the board



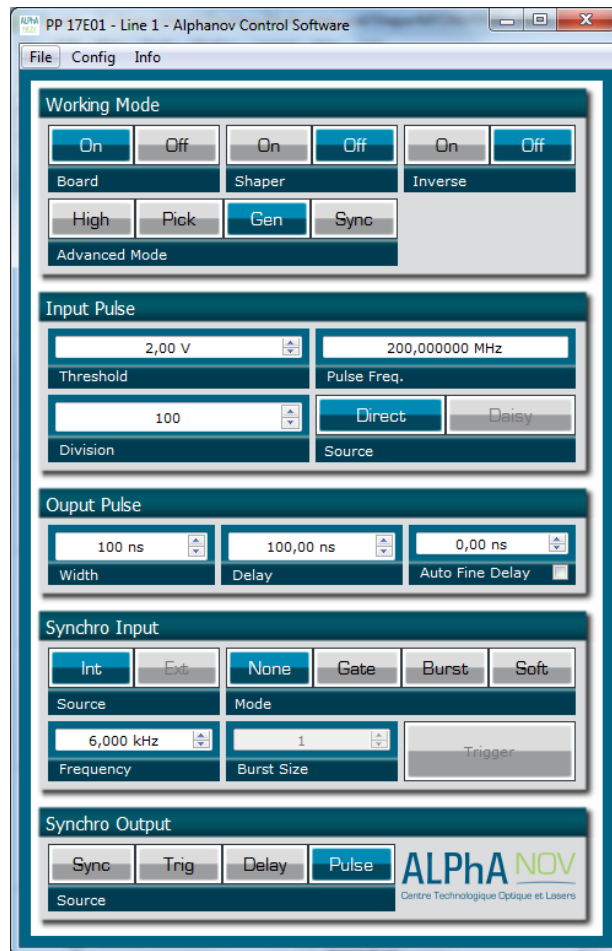
3.1.5 Software configuration

Launch the ALPhANOv Control Software and click on *Connect* to start the Tombak hardware detection. The software automatically detects the Tombak board.

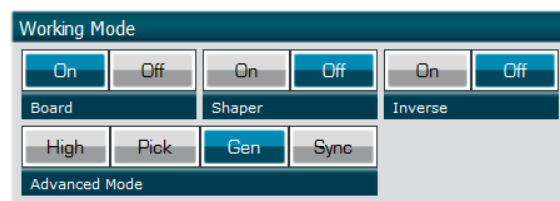


A window will appear for each Tombak connected to the computer.

The main configuration windows must be configured as follow :



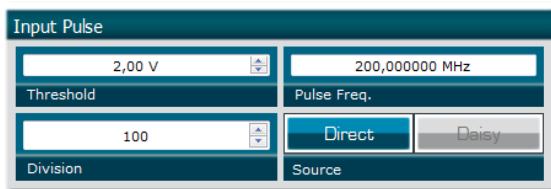
- Working Mode window :
 - Set the **Board** **On**
 - Set the **Shaper** button to **Off**
 - Set the **Inverse** button to **Off** unless you need to invert the output signal
 - Select **Gen** mode in **Advanced Mode**



- Input pulse window :
 - **Threshold** input voltage is not used in this configuration, set value to 0V (default settings)
 - **Delay** value is not used in this configuration, set value to 0V (default settings)
 - Set **Source** to **Direct** (default settings)
 - **Pulse Freq.** indicator give the internal rate generator. The output frequency is related to this primary value.
 - Set the **Division** factor according to the following definition :

$$i. \text{ Division }^{(*)} = \frac{\text{Pulse Freq(Hz)}}{\text{Output frequency(Hz)}}$$

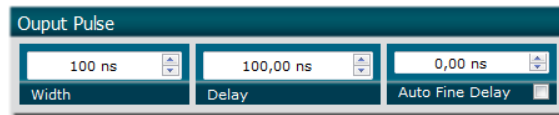
(*) Division must be at least 10 as the maximum output frequency is 20MHz.



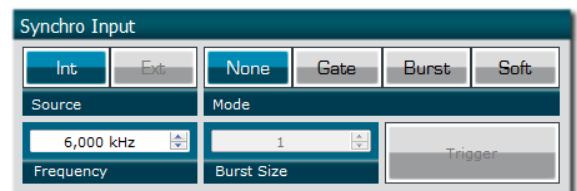
→ In this example, the division is set to 100 to get a 2MHz output frequency => 200MHz/2MHz = 100

- Output Pulse window :
 - **Delay** value is not used in this mode
 - **Auto Fine Delay** is not used in this mode
 - Choose the output **Pulse width** to get a specific duty cycle (*).

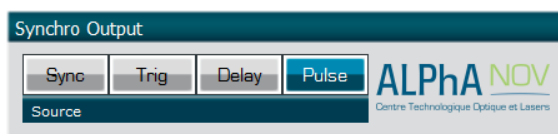
$$\text{Pulse width (s) }^{(*)} = \frac{\text{DutyCycle(\%)}}{100 * \text{OutputFrequency(Hz)}}$$



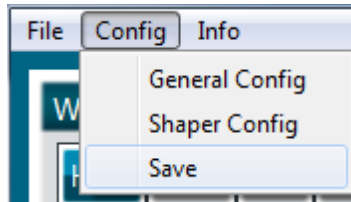
- Synchro input windows :
 - Source : Not used in this mode
 - Mode : None
 - Frequency : Not used in this mode
 - Burst size : Not used in this mode



- Synchro output window (default settings) :
 - Source : Pulse



Don't forget to save the settings by clicking on the "Save" button in the bar menu.



3.1.6 Main features

Adjustable output frequency	[0 – 20Mhz]
Frequency resolution (N is an integer in the range [10 – 10 ⁹])	$\frac{\text{Internal 200Mhz clock}}{N}$
Adjustable pulse width <ul style="list-style-type: none"> ▪ resolution (pulse width [5ns – 510ns]) ▪ resolution (pulse width [511ns – 2⁶²ns]) 	[5ns – >>1000 s] 2ns 5ns
Output Voltage	1 / 3,3 / 5 Volts (hardware setup)
Maximum output frequency	20 MHz

3.2 Using TOMBAK as a Digital Delay Generator

3.2.1 Presentation

There is 3 ways to drive this Digital Delay Generator :

- **Mode 1** : (Red continuous in Figure 5) :

This mode allows to generate a software configurable delay and pulse width signal from a reference pulse signal. The mode has the following limitations :

- Insertion delay is ~ 70ns
- Maximum output frequency is 20MHz
- Min output Pulsewidth is 5ns
- Min output Pulsewidth resolution is 2ns

- **Mode 2** : (Red continuous + Red dotted in Figure 5)

Same mode as above, but the output pulses are the same duration as input pulses. The limitations are the following :

- Insertion delay is about 50ns
- Maximum output frequency is 20MHz

- **Mode 3** : (Violet in Figure 5)

This mode gives the best performances in term of Jitter, insertion delay, pulse width and output frequency and do not face the limitations above. Its major characteristics are :

- Minimum insertion delay : 15ns (12ns when fine delay deactivated)
- Delay range (fine delay) : 0-10ns
- Max output frequency : 150 MHz

Important note : the description bellow concerns only Mode 1 and Mode 2. For Mode 3, please refer to §3.6 page 47 : Using TOMBAK as a Voltage Level Converter

3.2.2 Timing diagram

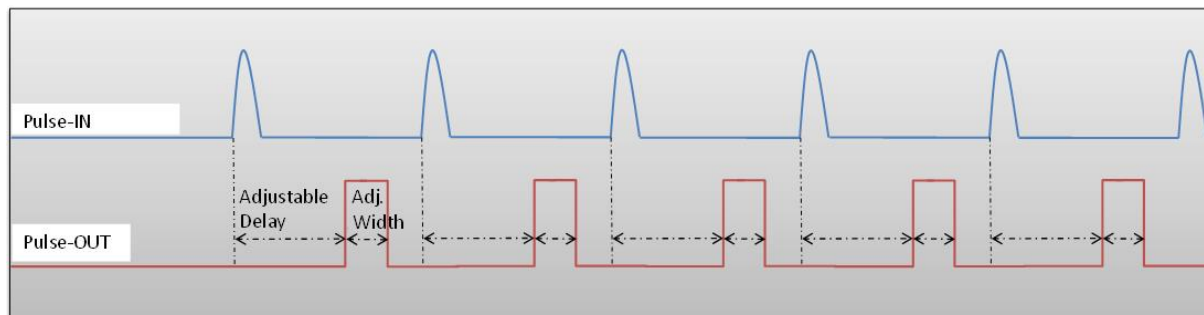


Figure 4 : Delayed and pulse width adjusted signal from input to output

3.2.3 Synoptic

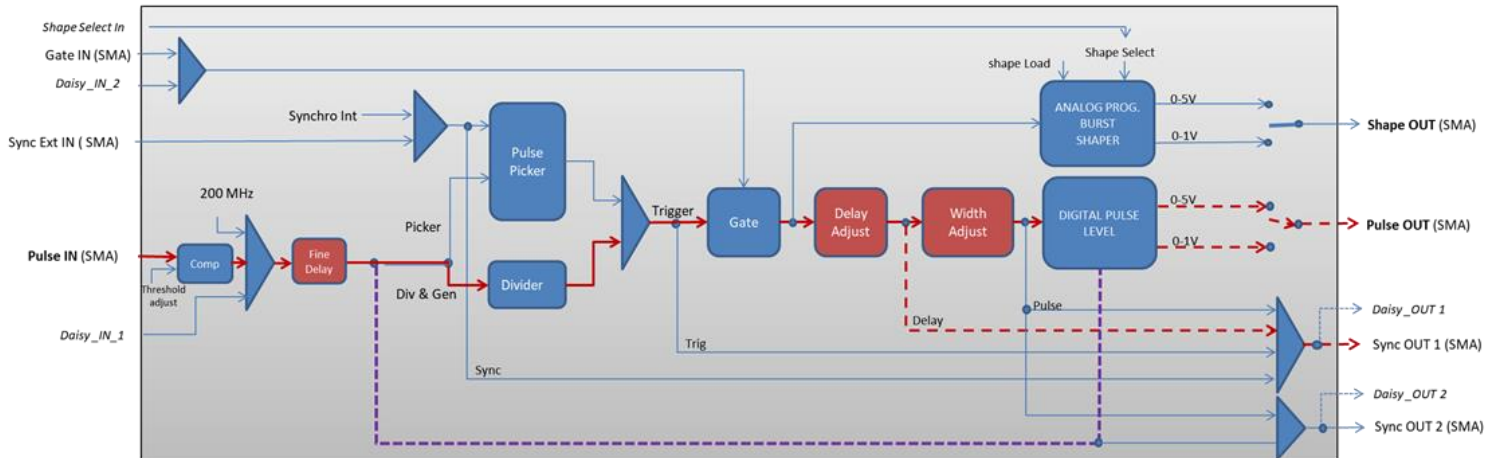
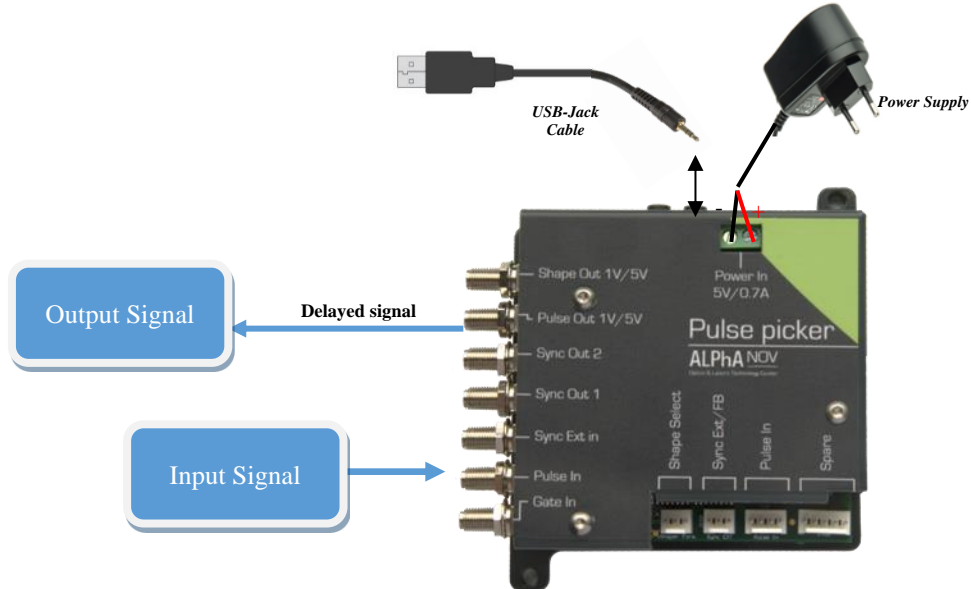


Figure 5 : Main firmware features used in Digital Delay Generator

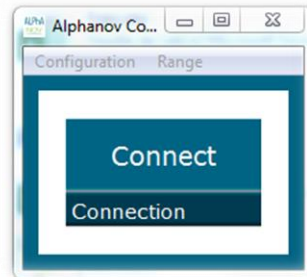
3.2.4 Cabling

1. Plug the USB-Jack cable in the “USB In” connector
2. Plug the signal generator (i.e. the signal you want to delay) in the “Pulse In” SMA connector
3. The software adjustable delay and pulse width signal will output on the “Pulse Out” SMA connector
4. Finally, plug the power supply to the “Power In” connector to power on the board



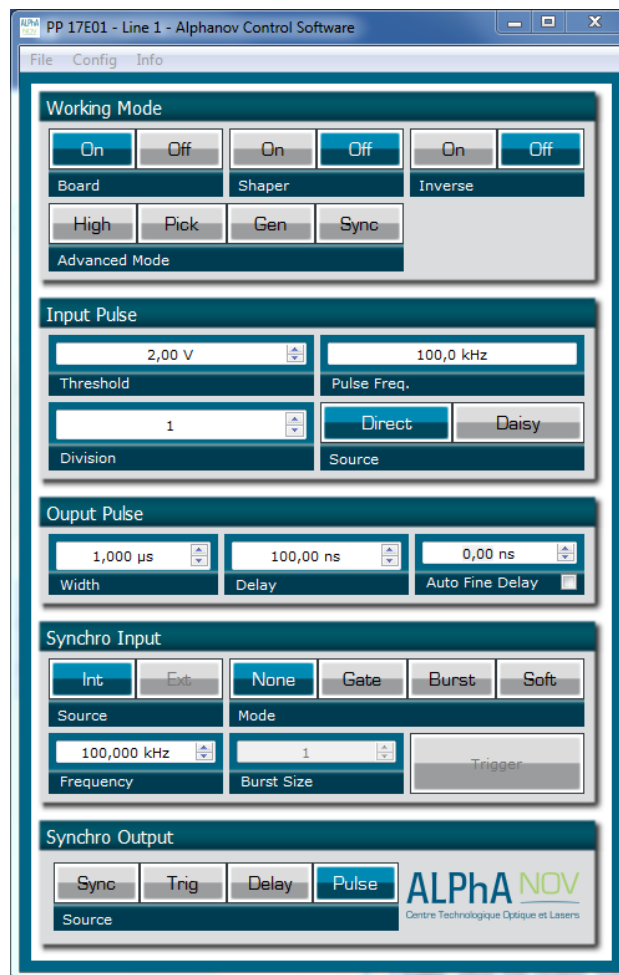
3.2.5 Software configuration

Launch the ALPhANOv Control Software and click on *Connect* to start the Tombak hardware detection. The software automatically detects the Tombak board.

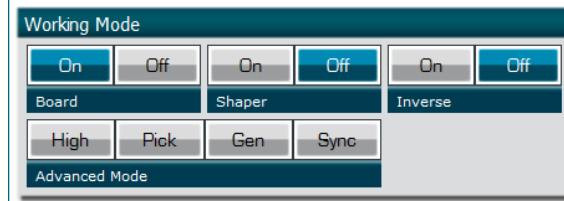


A window will appear for each Tombak connected to the computer.

The main configuration windows must be configured as follow :



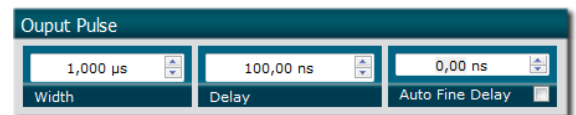
- Working Mode window :
 - Set the **Board** **On**
 - Set the **Shaper** button to **Off**
 - Set the **Inverse** button to **Off** unless you need to invert the output signal
 - Unset all **Advanced Mode**



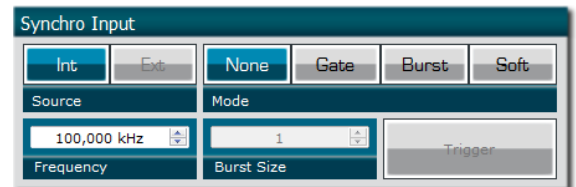
- Input pulse window :
 - Configure the **Threshold** voltage so that the input **pulse frequency** is detected and equal to your pulse generator system
 - Set the **Division** factor to **1**
 - Set the input pulse **Source** to **Direct**



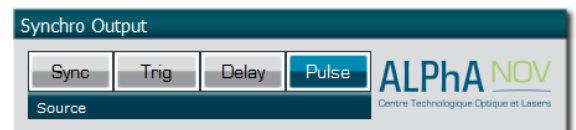
- Output Pulse window :
 - Choose the output **delay** value
 - Choose the output **pulse width**
 - **Auto Fine Delay** may be let in auto mode



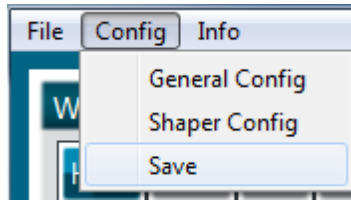
- Synchro input windows:
 - Source : not used in this mode
 - Mode : None
 - Frequency : not used in this mode
 - Burst size : not used in this mode



- Synchro output window (default settings) :
 - Source : Pulse



Don't forget to save the settings by clicking on the "Save" button in the bar menu.



3.2.6 Main features

Adjustable pulse width <ul style="list-style-type: none"> ▪ resolution (for pulse width [5ns – 510ns]) ▪ resolution (for pulse width [511ns – 2⁶²ns]) 	[5ns – >>1000s] 2ns 5ns
Adjustable pulse delay <ul style="list-style-type: none"> ▪ resolution 	[70ns – >>1000s] 10ps
Jitter <ul style="list-style-type: none"> ▪ for delay <10ns ▪ for delay < 570ns & pulse width < 510ns ▪ for any other delay & pulse width 	few ps rms <200 ps RMS 1.5 ns RMS
Input PulseIn voltage	30 mV – 3,3V
Input maximum frequency	20 MHz (mode 1 & 2) 150 MHz (mode 3)
Output Voltage	1 / 3,3 / 5 Volts (hardware setup)
Output maximum frequency	20 MHz in mode 1 & 2 150 MHz in mode 3

3.3 Using Tombak as a burst generator

3.3.1 Presentation

The board can generate a burst signal from an external trigger or from a software trigger.

The burst consist of a specific software adjustable number of pulses.

When triggered, the board output a burst signal with an adjustable pulse width, a specific delay and a frequency related to the “PulseIn” input signal.

3.3.2 Timing diagram

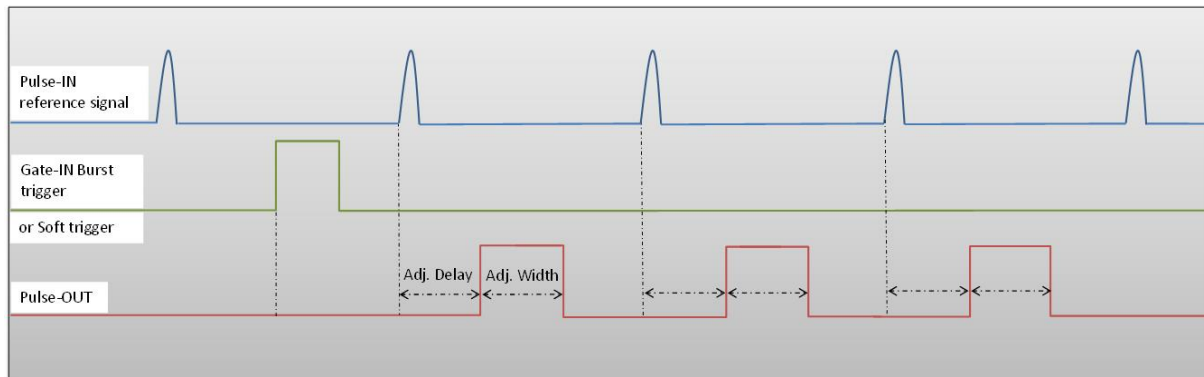


Figure 6 : Burst signal of 3 pulses, “Gate-IN” or Soft triggered and “Pulse-In” synchronized

3.3.3 Synoptic

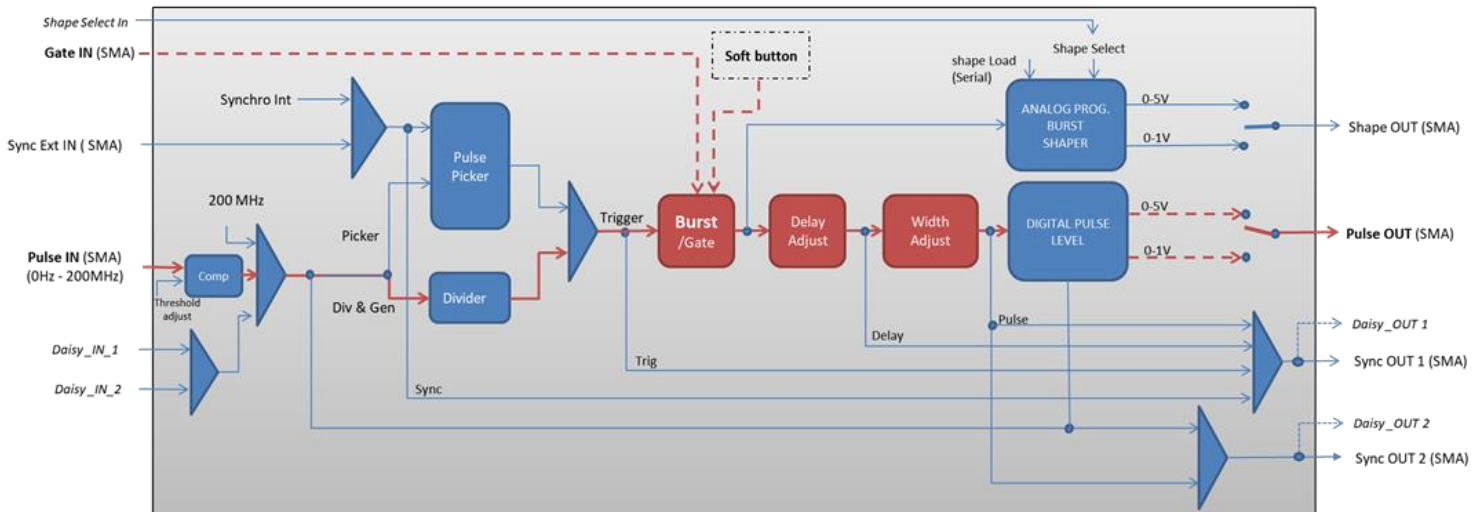
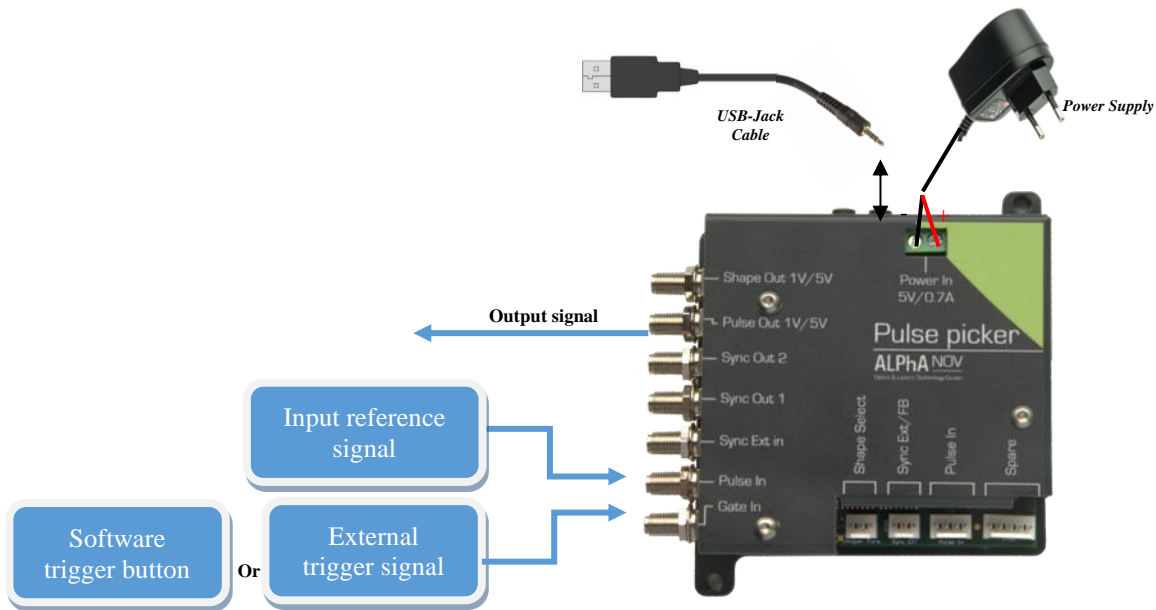


Figure 7 : Main firmware features used in Delay Generator

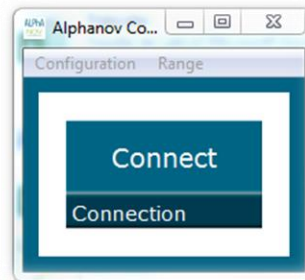
3.3.4 Cabling

1. Plug the USB-Jack cable in the “*USB In*” connector
2. Plug the power supply to the “*Power In*” connector to power on the board
3. Burst signal will output on the “*Pulse Out*” SMA connector
4. Connect the trigger signal that will start the burst to “*Gate In*” SMA connector
5. Connect the reference signal (i.e. the signal that will drive the burst when triggered) to “*Pulse In*” SMA connector.



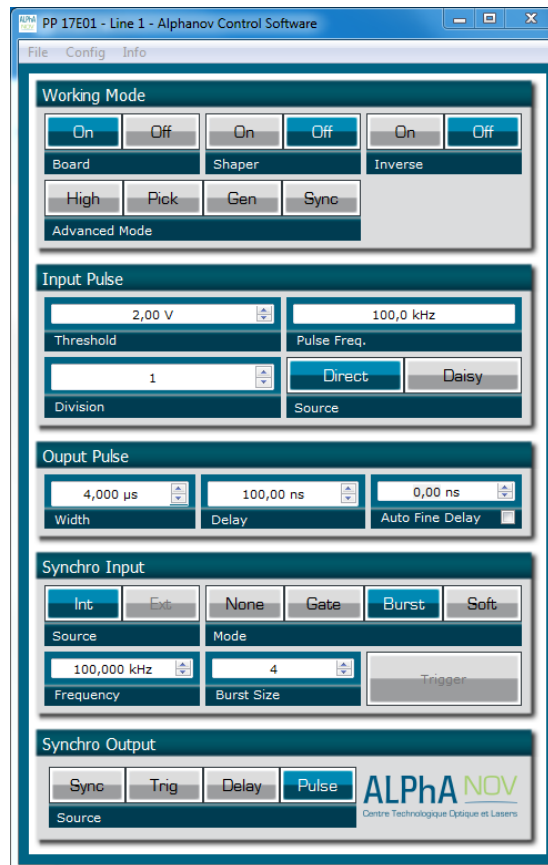
3.3.5 Software configuration

Launch the ALPhANOv Control Software and click on *Connect* to start the Tombak hardware detection. The software automatically detects the Tombak board.

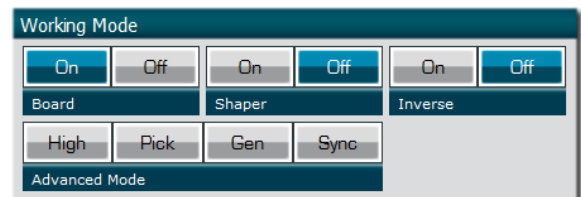


A window will appear for each Tombak connected to the computer.

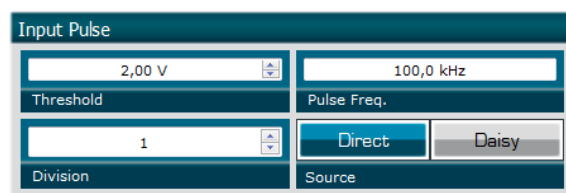
The main configuration windows must be configured as follow :



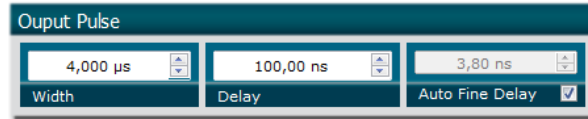
- Working Mode window :
 - Set the **Board** button to **ON**
 - Set the **Shaper** button to **Off**
 - Set the **Inverse** button to **Off**
 - Unset all **Advance Mode**



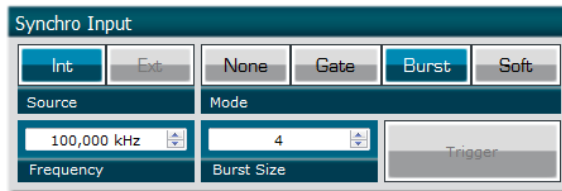
- Input pulse window :
 - Configure the **Threshold** voltage so that the input pulse frequency is detected and equal to your pulse generator system
 - Set the **Division** factor to **1** (default settings). Division value may be adjusted to divide the input reference signal frequency.
 - Set the input pulse **Source** to **Direct**



- Output Pulse window :
 - Set the output pulse **Width**
 - Set the **Delay** between output and input signals
 - **AutoFineDelay** may be let in auto mode



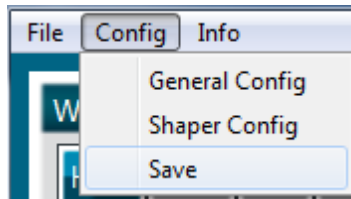
- Synchro input windows:
 - **Source** synchronisation is not used in this mode
 - Set **Mode** to Burst
 - **Frequency** is not used in this mode
 - Set the **Burst Size** value to configure the number of pulse triggered



- Synchro output window (default settings) :
 - Source : Pulse



Don't forget to save the settings by clicking on the "Save" button in the bar menu.



3.3.6 Main features

Burst size range	[1 - 10 ⁹] pulses
Adjustable pulse width <ul style="list-style-type: none"> ▪ resolution (pulse width [5ns – 510ns]) ▪ resolution (pulse width [511ns – 2⁶²ns]) 	[5ns – 2 ⁶² ns] 2ns 5ns
Adjustable pulse delay <ul style="list-style-type: none"> ▪ resolution 	[70ns – 2 ⁶² ns] 10ps
Input Trigger Voltage <ul style="list-style-type: none"> ▪ Logic Low ▪ Logic High 	[0-0.8V] [1.7-3.3V]
Input PulseIn voltage	30 mV – 3,3V
Output Voltage	1 / 3,3 / 5 Volts (hardware setup)
Output maximum frequency	20 MHz

3.4 Using the Gate feature of TOMBAK

3.4.1 Presentation

Signal gating allow user to enable output for a specific time windows. Input signal frequency is then reproduced on the output with a software programmable delay and pulse width.

3.4.2 Timing diagram

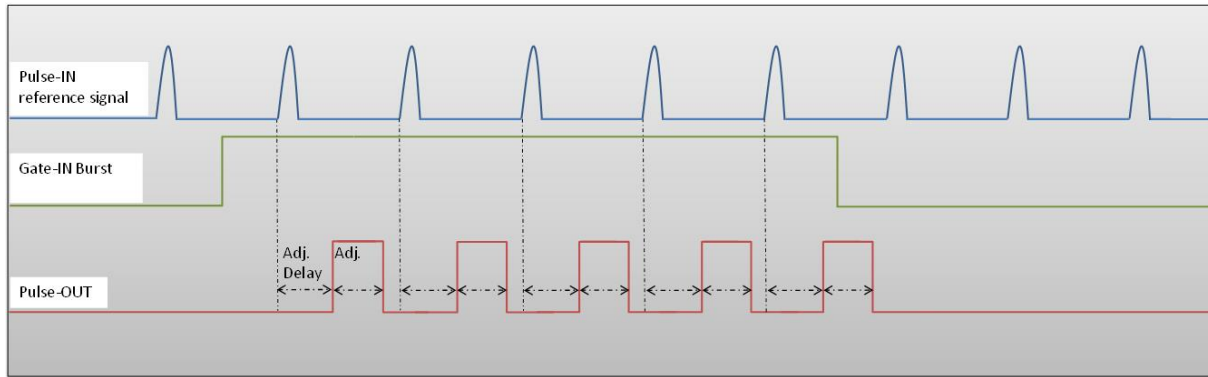


Figure 8 : Gated output from Gate-IN external signal

3.4.1 Synoptic

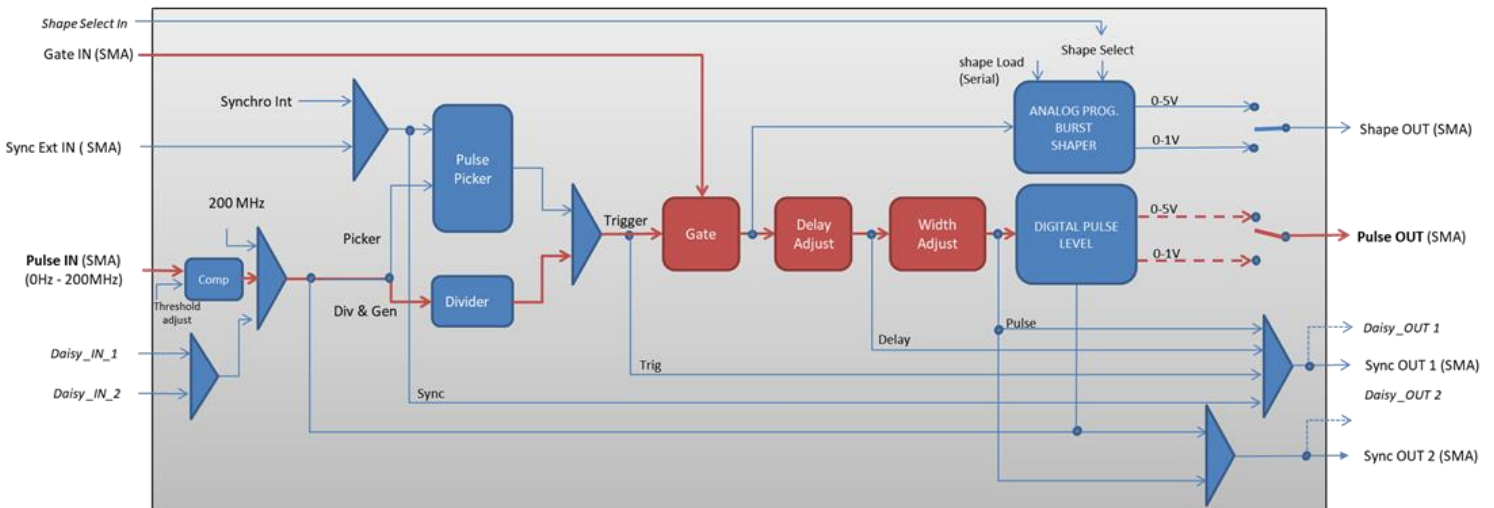
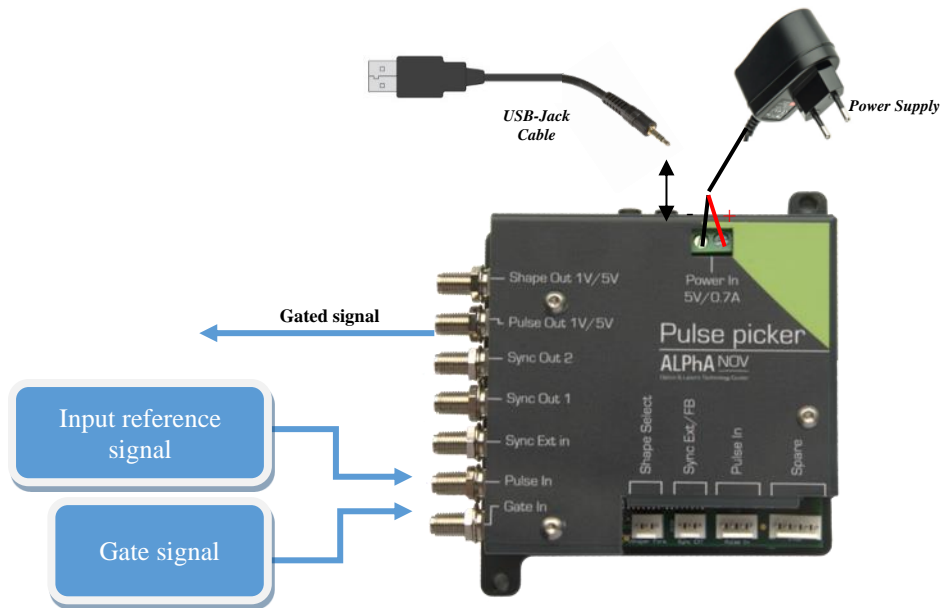


Figure 9 : Main software features used in Gate Mode

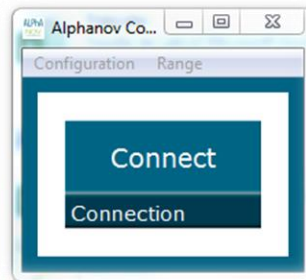
3.4.2 Cabling

1. Plug the USB-Jack cable in the “*USB In*” connector
2. Plug the power supply to the “*Power In*” connector to power on the board
3. Connect the Gate signal that will enable the output to Gate-In connector
4. Connect the reference signal (i.e. the signal that will drive the output when Gate-In signal is high level) to “*Pulse In*” connector
5. Gated signal will output on the “*Pulse Out*” connector



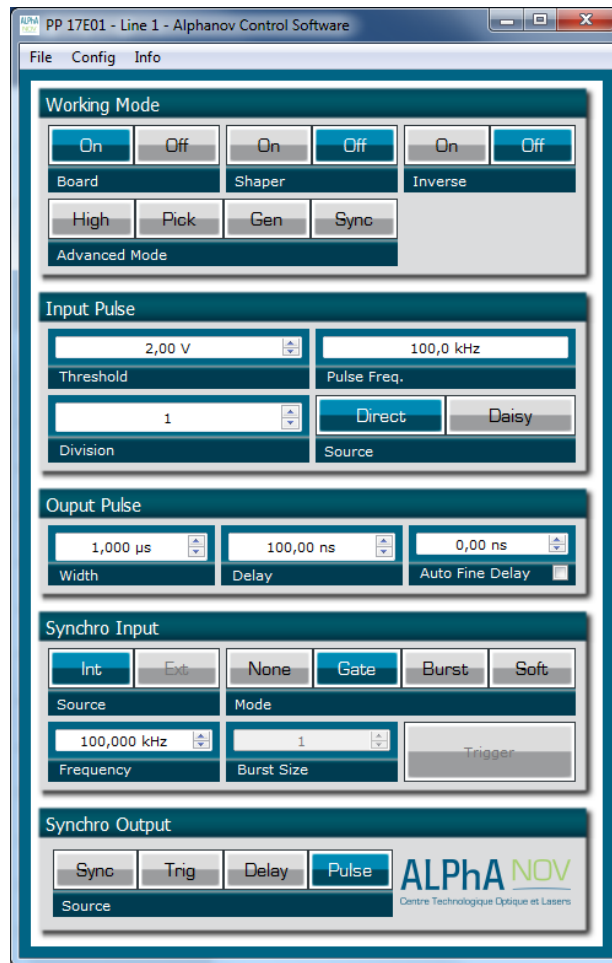
3.4.3 Software configuration

Launch the ALPhANOv Control Software and click on *Connect* to start the Tombak hardware detection. The software automatically detects the Tombak board.

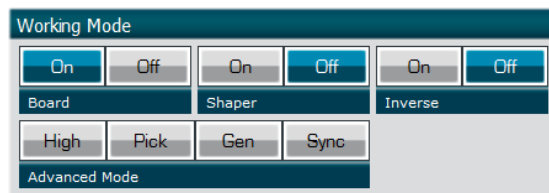


A window will appear for each Tombak connected to the computer.

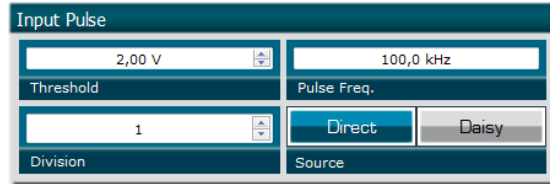
The main configuration windows must be configured as follow :



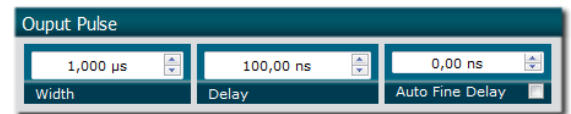
- Working Mode window :
 - Set the **Shaper** button to **Off**
 - Set the **Inverse** button to **Off** unless you need to invert the output signal
 - Unset all **Advanced Mode**
 - Finally set the **Board** On



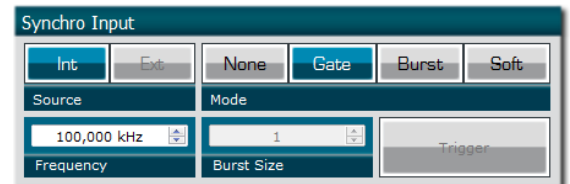
- Input pulse window :
 - Configure the **Threshold** voltage so that the input **pulse frequency** is detected and equal to your pulse generator system
 - Set the **Division** factor to **1**
 - Set the input pulse **Source** to **Direct**



- Output Pulse window :
 - Choose the output **delay value**
 - Choose the output **pulse width**
 - **Auto Fine Delay** may be let in auto mode



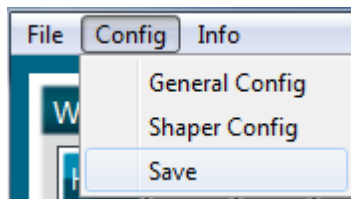
- Synchro input windows:
 - Source : not used in this mode
 - Mode : Gate
 - Frequency : not used in this mode
 - Burst size : not used in this mode



- Synchro output window (default settings) :
 - Source : Pulse



Don't forget to save the settings by clicking on the "Save" button in the bar menu.



3.4.4 Main features

Adjustable pulse width <ul style="list-style-type: none"> ▪ resolution (pulse width [5ns – 510ns]) ▪ resolution (pulse width [511ns – 2⁶²ns]) 	[5ns – >> 1000 s] 2ns 5ns
Adjustable pulse delay <ul style="list-style-type: none"> ▪ resolution 	[70ns – >> 1000 s] 10ps
Input Gate Voltage <ul style="list-style-type: none"> ▪ Logic Low ▪ Logic High 	[0-0.8V] [1.7-3.3V]
Input PulseIn voltage	30 mV – 3,3V
Output Voltage	1 / 3,3 / 5 Volts (hardware setup)
Output maximum frequency	20 MHz

3.5 Using TOMBAK as a signal synchronization module

3.5.1 Presentation

Synchronization signals is available on this module. A signal (internally generated or external) can be synchronized with an external reference signal connected to Pulse-In connector.

The output delay from input and the pulse width are software adjustable.

3.5.2 Timing diagram

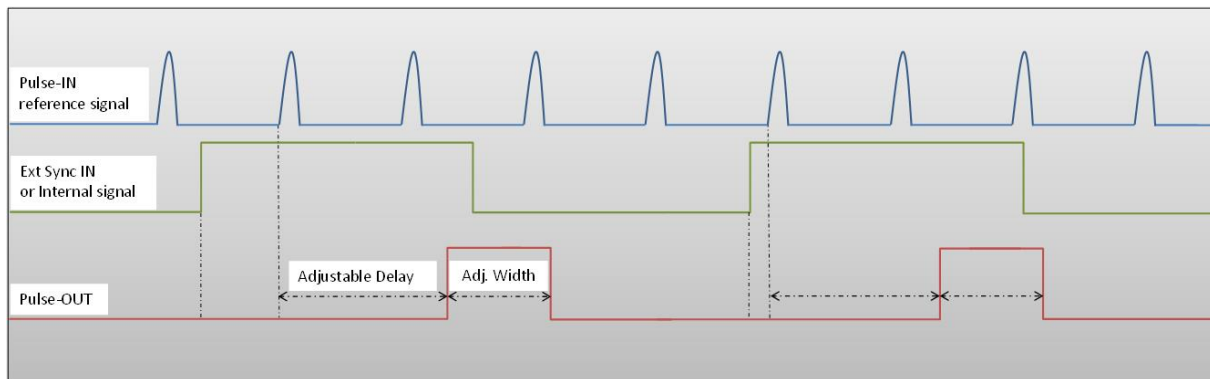


Figure 10 : External or internal signal synchronized with Pulse-In signal.

3.5.1 Synoptic

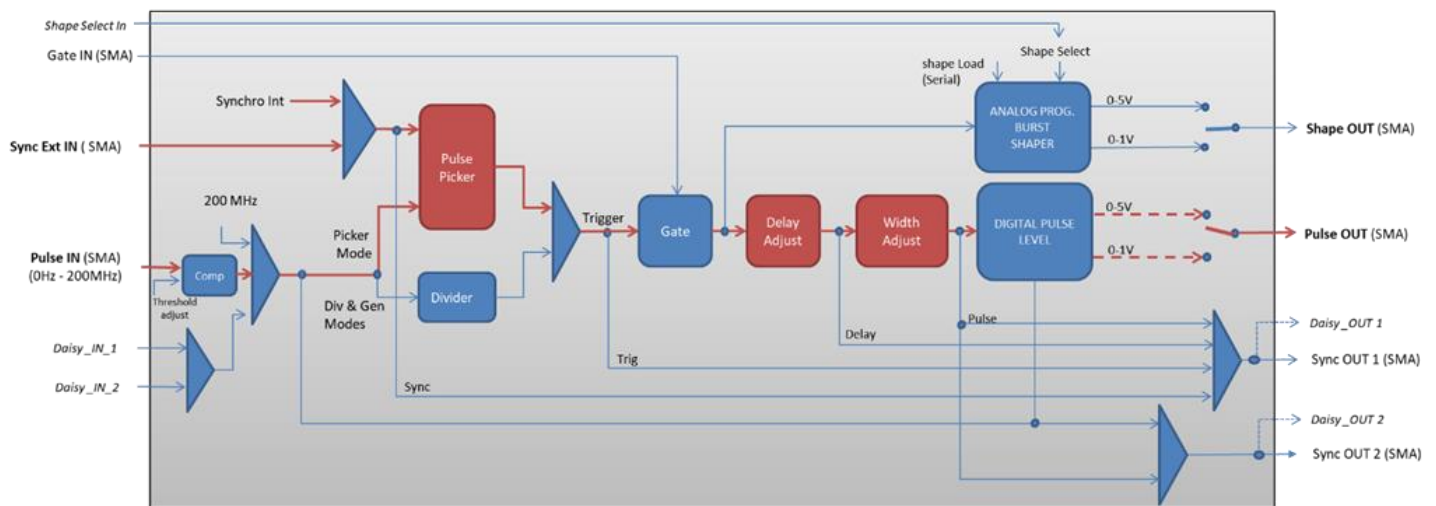
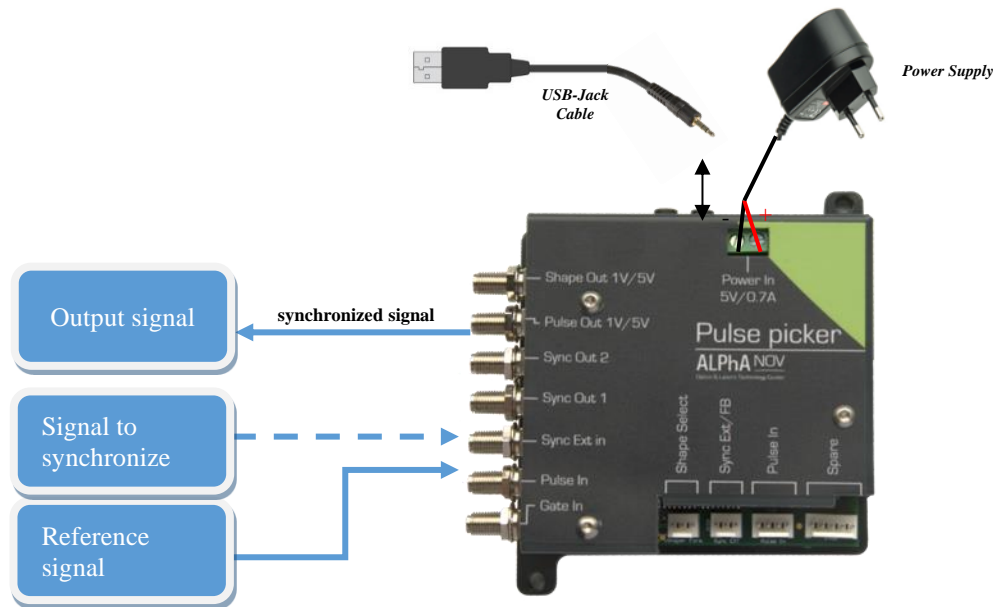


Figure 11 Main firmware features used in synchronization mode

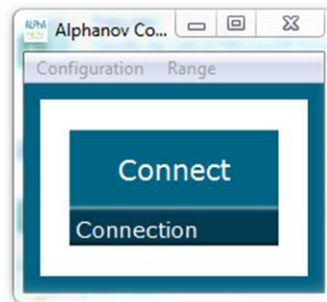
3.5.2 Cabling

1. Plug the USB-Jack cable in the “*USB In*” connector
2. Plug the signal to synchronize in the “*Sync Ext in*” SMA connector. (only for external signal synchronization). If signal to synchronize is internally generated, no signal needed on “*Sync Ext in*”.
3. Plug the reference signal (i.e. the signal on which “*Sync Ext In*” signal or “*internal signal*” will be synchronized with) in the “*Pulse In*” SMA connector
4. The synchronized signal will output on the “*Pulse Out*” SMA connector
5. Finally, plug the power supply to the “*Power In*” connector to power on the board



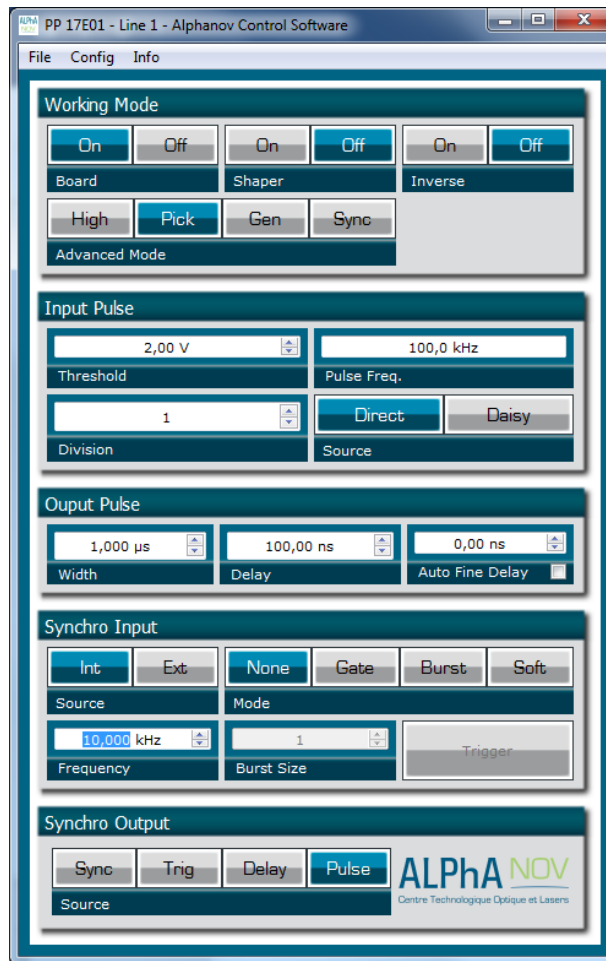
3.5.3 Software configuration

Launch the ALPhANOV Control Software and click on *Connect* to start the Tombak hardware detection. The software automatically detects the Tombak board.

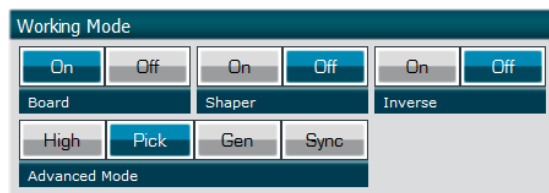


A window will appear for each Tombak connected to the computer.

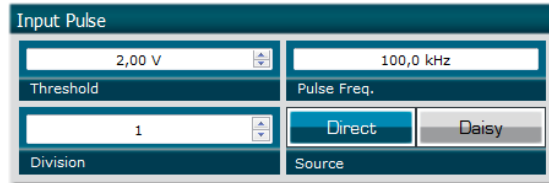
The main configuration windows must be configured as follow :



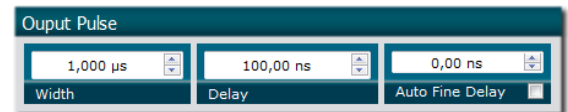
- Working Mode window :
 - Set the **Board** On
 - Set the **Shaper** button to **Off**
 - Set the **Inverse** button to **Off** unless you need to invert the output signal
 - Set **Advanced Mode** to **Pick**



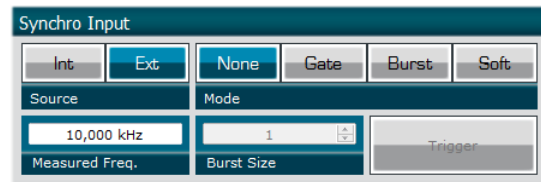
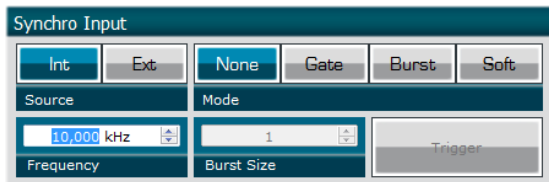
- Input pulse window :
 - Configure the **Threshold** voltage so that the input **pulse frequency** is detected and equal to your pulse generator system
 - Set the **Division** factor to **1**
 - Set the input pulse **Source** to **Direct**



- Output Pulse window :
 - Choose the output **delay value**
 - Choose the output **pulse width**
 - **Auto Fine Delay** may be let in auto mode



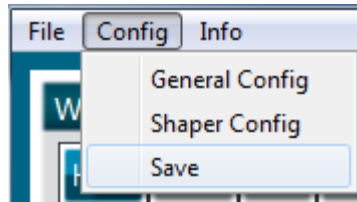
- Synchro input windows :
 - Source :
 1. Set **Int** to synchronize an internal generated signal with Pulse-In signal.
 2. Set **Ext** to synchronize an external signal (connected to Ext-In connector) with Pulse-In signal.
 - Mode : None
 - Frequency :
 1. If internal source is selected, set the output signal **Frequency** you need to synchronize.
 2. If external source is selected, **Frequency** shows the input Ext-In signal frequency
 - Burst size : not used in this mode



- Synchro output window (default settings) :
 - Source : Pulse



Don't forget to save the settings by clicking on the "Save" button in the bar menu.



3.5.4 Main features

Adjustable pulse width	[5ns – >>1000s]
<ul style="list-style-type: none"> ▪ resolution (for pulse width [5ns – 510ns]) ▪ resolution (for pulse width [511ns – 2⁶²ns]) 	2ns 5ns
Adjustable pulse delay	[70ns – >>1000s]
<ul style="list-style-type: none"> ▪ resolution 	10ps
Input Ext-In Voltage	
<ul style="list-style-type: none"> ▪ Logic Low ▪ Logic High 	[0-0.8V] [1.7-3.3V]
Input PulseIn voltage	30 mV – 3,3V
Input maximum frequency	200 MHz
Output Voltage	1 / 3,3 / 5 Volts (hardware setup)
Output maximum frequency	20 MHz

3.6 Using TOMBAK as a Voltage Level Converter

3.6.1 Presentation

The board can be used as a voltage level converter in every mode that used the PulseIn signal as a reference signal. However, SYNC mode is a specific mode that gives extended performance to the voltage converter feature (higher frequency, lower jitter, **lower insertion delay** ...).

An additional “Autofine delay” can be added which adds a 0-10ns delay while keeping a very short insertion delay and ultra-low Jitter.

3.6.2 Timing diagram

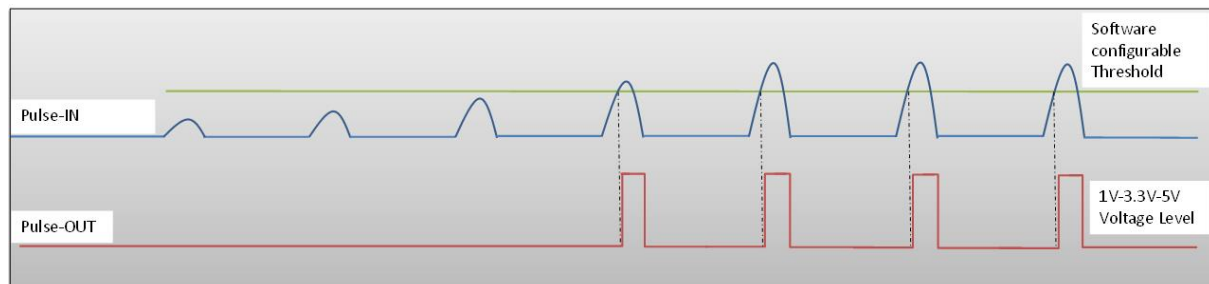


Figure 12 : Pulse In detection signal with software adjustable threshold

3.6.3 Synoptic

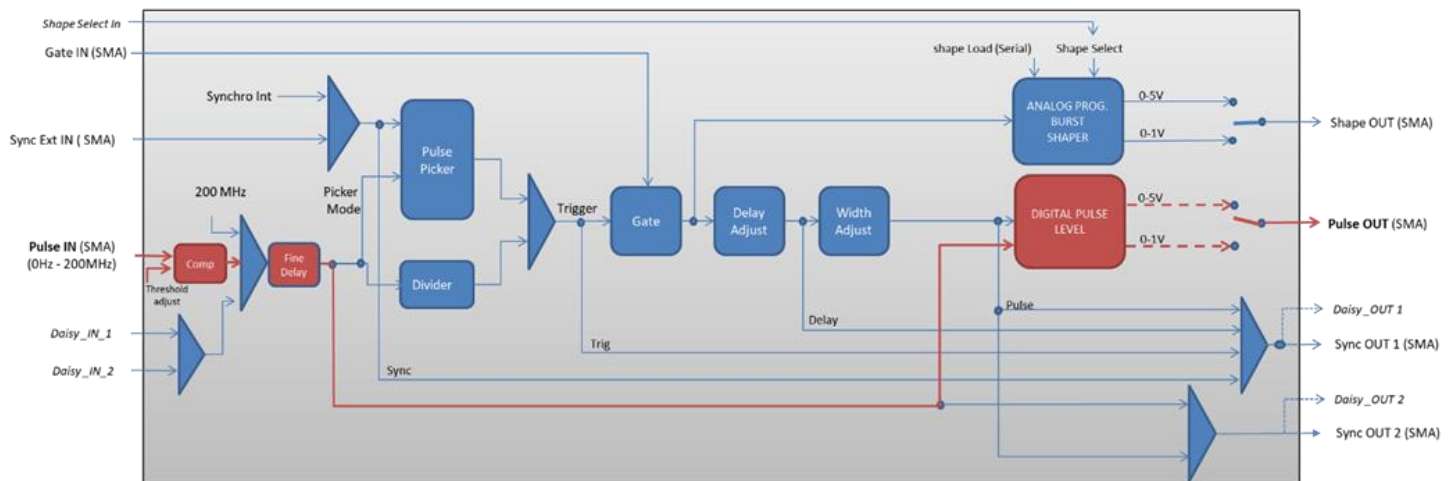
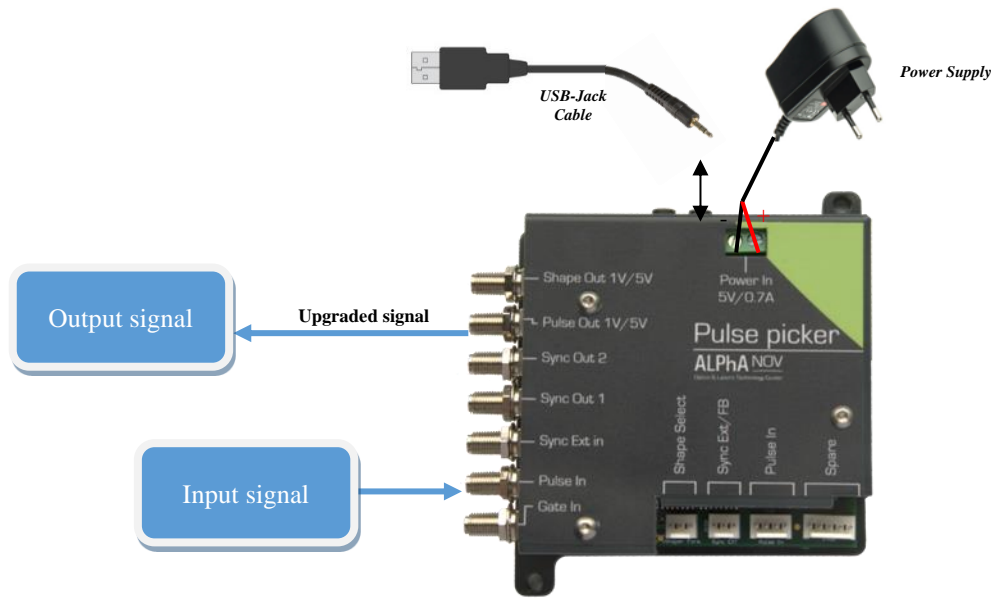


Figure 13 : Main firmware features used in Voltage Level Converter

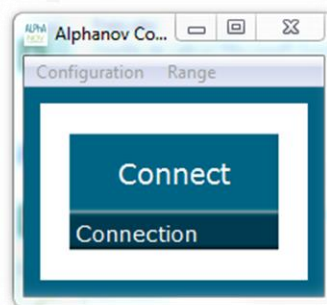
3.6.4 Cabling

1. Plug the USB-Jack cable in the “*USB In*” connector
2. Plug the signal you want to convert in the “*Pulse In*” SMA connector
3. The upgraded signal will output on the “*Pulse Out*” SMA connector
4. Finally, plug the power supply to the “*Power In*” connector to power on the board



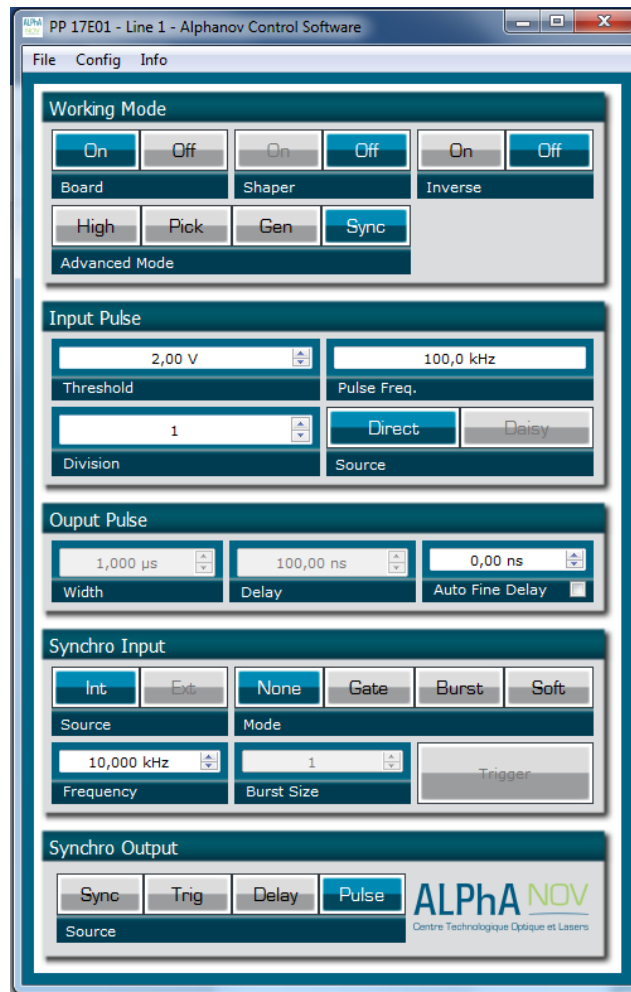
3.6.5 Software configuration

Launch the ALPhANOv Control Software and click on *Connect* to start the Tombak hardware detection. The software automatically detects the Tombak board.

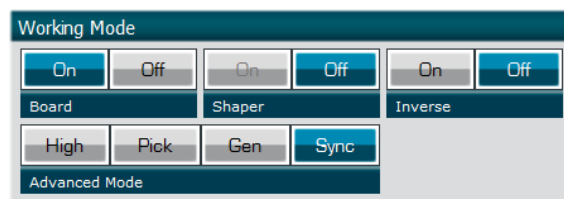


A window will appear for each Tombak connected to the computer.

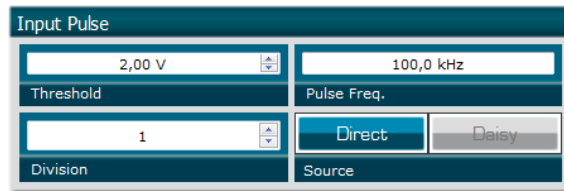
The main configuration windows must be configured as follow :



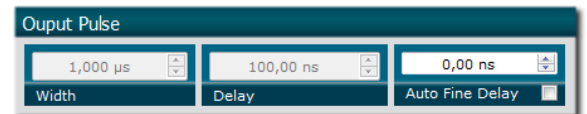
- Working Mode window :
 - Set the **Board** On
 - Set the **Shaper** button to **Off**
 - Set the **Inverse** button to **Off** unless you need to invert the output signal
 - Set **Advanced Mode** to **Sync**



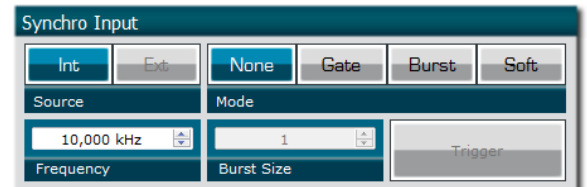
- Input pulse window :
 - Configure the **Threshold** voltage so that the input **pulse frequency** is detected and equal to your pulse generator system
 - Set the **Division** factor to **1**
 - Set the input pulse **Source** to **Direct**
 -



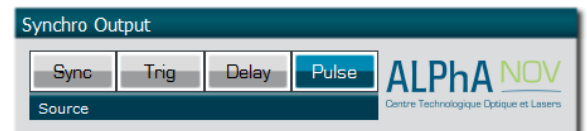
- Output Pulse window :
 - Choose the output **delay value**
 - Choose the output **pulse width**
 - **Auto Fine Delay** may be let in auto mode



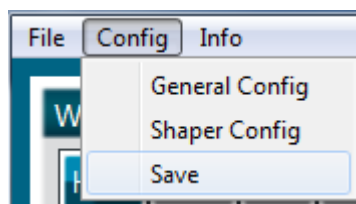
- Synchro input windows (default settings) :
 - Source : not used in this mode
 - Gate Mode : None
 - Frequency : not used in this mode
 - Burst size : not used in this mode



- Synchro output window (default settings) :
 - Source : Pulse



Don't forget to save the settings by clicking on the "Save" button in the bar menu.



3.6.6 Main features

Input PulseIn voltage (software adjustable threshold)	30 mV – 3,3V
Input/output maximum frequency	150 MHz
Minimum insertion delay (fine delay deactivated) (see fig 2)	12 ns
Minimum insertion delay (0-10ns fine delay) (see fig 2)	15 ns
Output Voltage	1 / 3,3 / 5 Volts (hardware setup – see user manual for selecting it)

3.7 Using TOMBAK as a frequency divider

3.7.1 Presentation

The board provides a software configurable frequency divider with specific delay and pulse width signal from a reference pulse signal.

3.7.2 Timing diagram

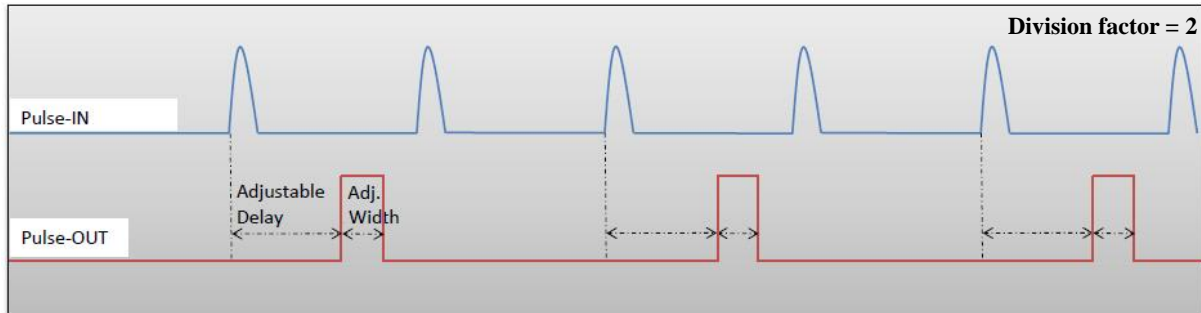


Figure 14 : Frequency divided, delayed and pulse width adjusted signal from input to output

3.7.3 Synoptic

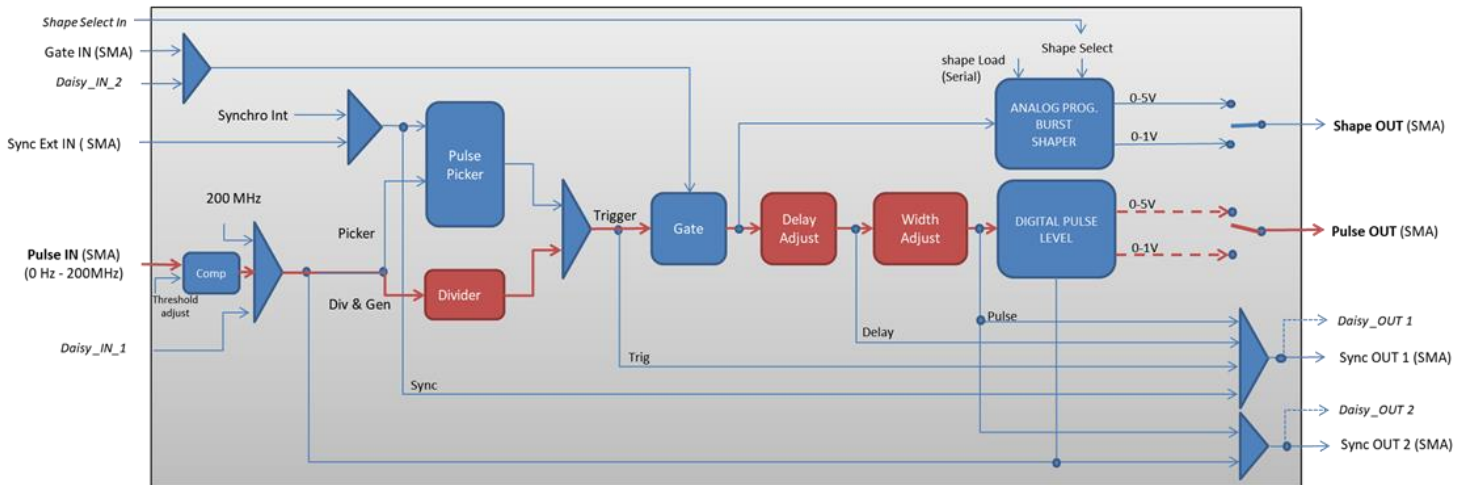
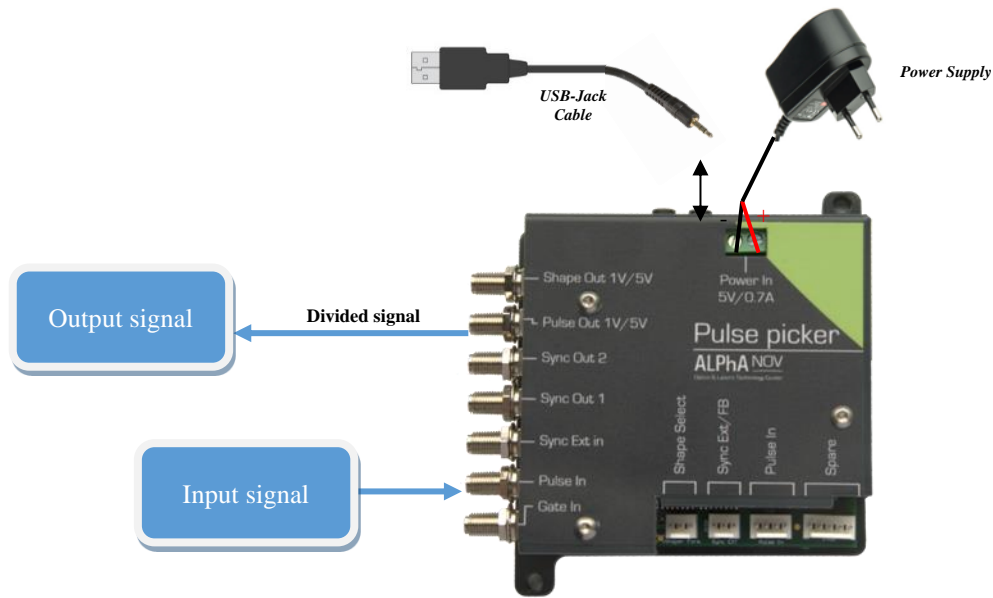


Figure 15 : Main firmware features used in frequency divider mode

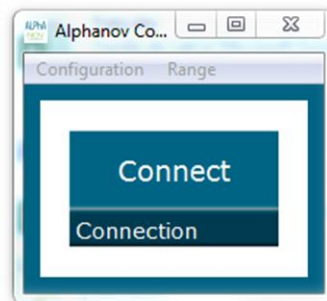
3.7.4 Cabling

5. Plug the USB-Jack cable in the “*USB In*” connector
6. Plug the signal you want to convert in the “*Pulse In*” SMA connector
7. The upgraded signal will output on the “*Pulse Out*” SMA connector
8. Finally, plug the power supply to the “*Power In*” connector to power on the board



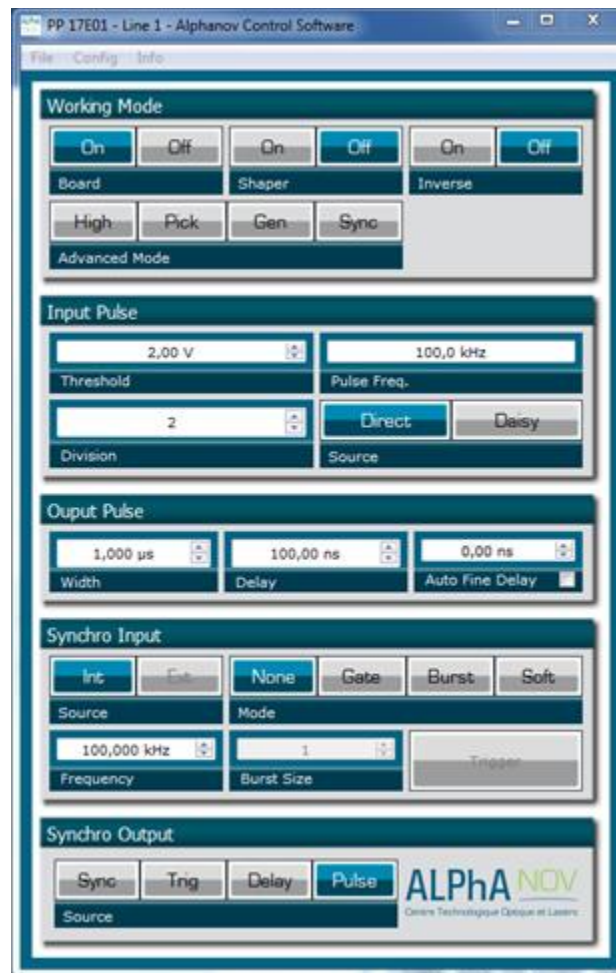
3.7.5 Software configuration

Launch the ALPhANOv Control Software and click on *Connect* to start the Tombak hardware detection. The software automatically detects the Tombak board.

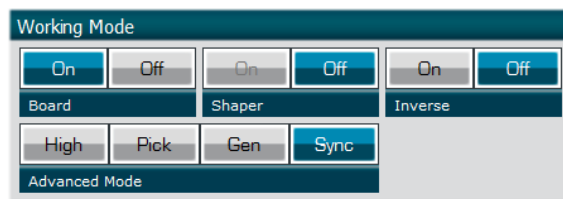


A window will appear for each Tombak connected to the computer.

The main configuration windows must be configured as follow :



- Working Mode window :
 - Set the **Board** On
 - Set the **Shaper** button to **Off**
 - Set the **Inverse** button to **Off** unless you need to invert the output signal
 - Set **Advanced Mode** to **Sync**

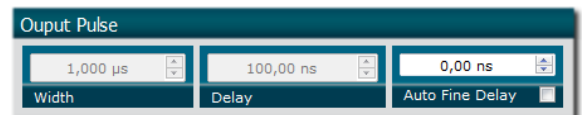


- Input pulse window :

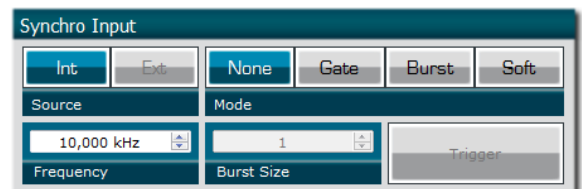
- Configure the **Threshold** voltage so that the input **pulse frequency** is detected and equal to your pulse generator system
- Set the **Division** factor **according to your application**
- Set the input pulse **Source** to **Direct**
-



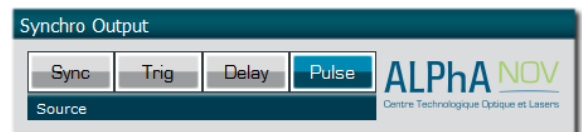
- Output Pulse window :
 - Choose the output **delay value**
 - Choose the output **pulse width**
 - **Auto Fine Delay** may be let in auto mode



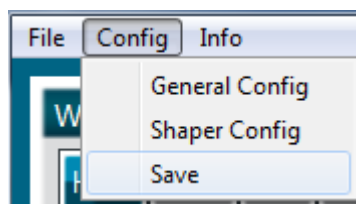
- Synchro input windows (default settings) :
 - Source : not used in this mode
 - Gate Mode : None
 - Frequency : not used in this mode
 - Burst size : not used in this mode



- Synchro output window (default settings) :
 - Source : Pulse



Don't forget to save the settings by clicking on the "Save" button in the bar menu.



3.7.6 Main features

Frequency divider factor	[1 – 10 ⁹]
Adjustable pulse width <ul style="list-style-type: none"> ▪ resolution (for pulse width [5ns – 510ns]) ▪ resolution (for pulse width [511ns – 2⁶²ns]) 	[5ns – >>1000s] 2ns 5ns
Adjustable pulse delay <ul style="list-style-type: none"> ▪ resolution 	[70ns – >>1000s] 10ps
Jitter <ul style="list-style-type: none"> ▪ for delay < 570ns & pulse width < 510ns ▪ for any other delay & pulse width 	<200 ps RMS 1.5 ns RMS
Input PulseIn voltage	30 mV – 3,3V
Input maximum frequency	200 MHz
Output Voltage	1 / 3,3 / 5 Volts (hardware setup)
Output maximum frequency	20 MHz

3.8 Using TOMBAK as a PULSE-PICKER

3.8.1 Introduction / Overview

When someone wants to generate a pulse (open a time domain door) at a low repetition rate (for example Hz/kHz range) which must be synchronized with a high frequency signal/clock (for example 100MHz range), There is two solutions :

1. The most immediate is to divide the clock signal frequency. Using the Tombak for that is described in the first part of this document. **See § 3.7 p 52**
2. When the low frequency pulse/door must also be synchronized with a low frequency external or internal signal (in other word, when we want a low repetition rate pulse at a repetition rate of a low repetition rate trigger BUT synchronized with a high frequency clock), the solution is to use the PICK mode of the Tombak. Note that in this last case, if the low frequency trigger is not synchronized with the high frequency clock, there will be a unavoidable Jitter which value is $1/\text{clock frequency}$. **See §3.5 p 42**

In both case above, the TOMBAK opens a door with adjustable delays and adjustable width which can be used to synchronize external optical device, such as an AOM, EOM or SOA.

3.8.2 Timing diagrams

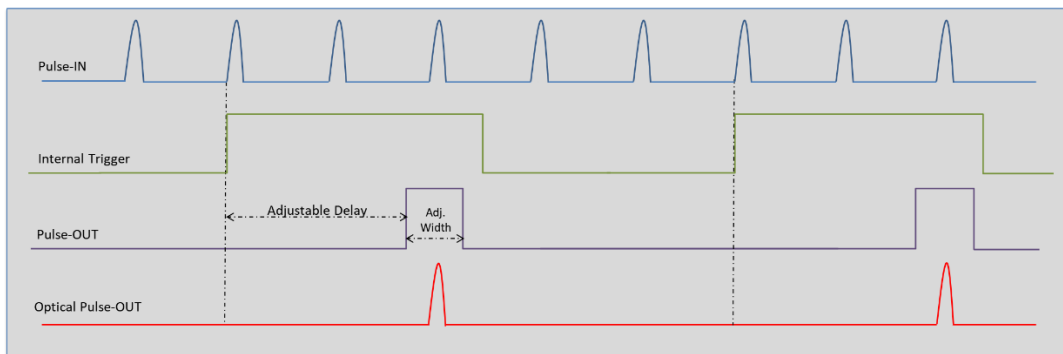


Figure 16 : Pulse-picking using the Frequency divider mode (division per 6 here) see § 3.7 p 52

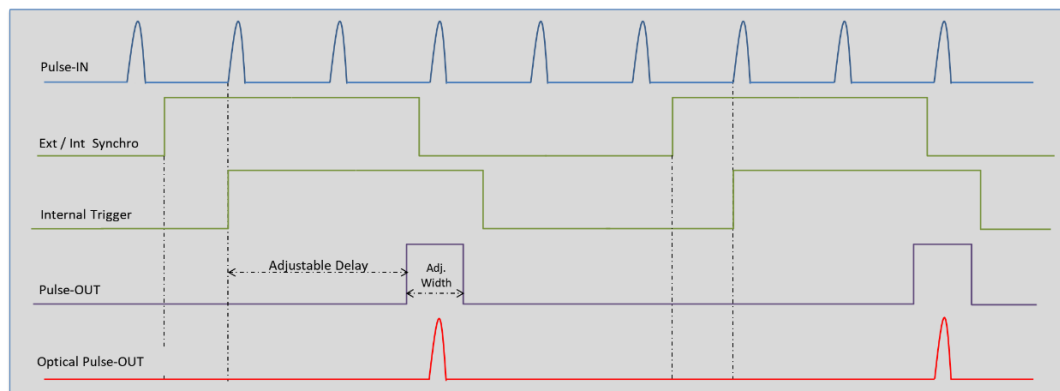


Figure 17 : Pulse-picking using the Synchronization mode described §3.5 p 42

3.9 Using TOMBAK as an AWG (Arbitrary Waveform Generator)

Tombak can be used as a special AWG. This part of the User manual is in progress. Please contact us if you need more information.

4.0 REMOTE COMMUNICATION

4.1 Protocol Description

4.1.1 Getting started: configure UART

The communication between the computer and the product is done by a serial link (RS232) with a physical USB link (virtual COM port).

The COM port needs to be configured as:

- 125000 bauds
- 8 data bits
- None parity
- 1 stop bit

4.1.2 Protocol

4.1.2.1 Sequence

The communication principle between the computer and the product is **query/response**. The computer can't do multiple queries without response, except in case of **timeout**. The maximal authorized treatment time is **500ms**.

4.1.2.2 Notation

The data are prefixed by a type, with the followed notation:

- U08/U16/U32/U64 : unsigned 8/16/32/64-bit integer
- S08/S16/S32/U64 : signed 8/16/32/64-bit integer
- F32 : 32-bit float (IEEE 754 Single precision)

4.1.2.3 Query

The coding is a « **big endian** » type.

The maximum length of queries/responses is 256 octets (4 octets for LEN, ADD, CMD and CHK) and 252 octets for data

A query is of the form:

Byte0	Byte1	Byte2	Byte3	...	Byte n-1	Byte n
U08_LEN	U08_ADD	U08_CMD	DATA0	...	DATAm	CHK

With:

- U08_LEN** : Total length of the query (from LEN to CHK)
- U08_ADD** : Address of the product
- U08_CMD** : Command ID
- DATA[0..m]** : Data
- CHK** : Checksum

4.1.2.4 Response

A response is of the form:

Byte0	Byte1	Byte2	...	Byte m-1	Byte n
U08_LEN	U08_STS	DATA0	...	DATAm	CHK

With:

U08_LEN : Total length of the query (from LEN to CHK)

U08_STS : Status of the response

DATA[0..m] : Data

CHK : Checksum

4.1.2.5 Status

The octet of the status response may have the following values:

<i>STS</i>	<i>Description</i>
0x00	Ok
0x01	Timeout
0x02	Unknown command
0x04	Query error
0x08	Bad length
0x10	Checksum error

4.1.2.5.1 Ok status

If the return status is ok, the DATA[0..n] octets correspond to the response. If the status isn't ok, the response doesn't contain data and the response is given in next paragraphs.

4.1.2.5.2 Timeout status

In case of a timeout error (number of received octets inferior to number of octets indicated in the LEN), the response is:

LEN	STS	CHK
0x03	0x01	CHK

4.1.2.5.3 Unknown command status

If the ID of the command is unknown, the response is:

LEN	STS	CHK
0x03	0x02	CHK

4.1.2.5.4 Query error status

In case of a treatment error, the response is:

LEN	STS	CHK
0x03	0x04	CHK

The error type must be read with the Query « Read error code ».

4.1.2.5.5 Bad length status

The length of the query is not valid ($< 2 (LEN+CMD)$), superior to the maximum number of octets or incoherent with the expected command).

The response is:

LEN	STS	CHK
0x03	0x08	CHK

4.1.2.5.6 Checksum

The checksum is used to verify the integrity of the physical link. The checksum is the result of Exclusive Or of the octets minus 1.

The formula for a query is:

$$CHK = (LEN \oplus CMD \oplus DATA0 \oplus \dots \oplus DATA_n) - 1$$

The formula for a response is!

$$CHK = (LEN \oplus STS \oplus DATA0 \oplus \dots \oplus DATA_n) - 1$$

4.1.3 Messaging

This paragraph describes command lists (Query + Response). The given responses correspond to a good execution of the query. In case of bad query, the return response is a status type (§4.1.2.5).

The table below gives a list of possible commands:

<i>CMD</i>	<i>Description</i>
0x00	Write the equipment address
0x01	Read the equipment address
0x02	Read protocol version
0x03	Read error code
0x04 .. 0x0F	Reserved
0x10	Write instruction
0x11	Read instruction
0x12	Apply all instructions
0x13	Save all instructions
0x14	Read measure
0x16	Write shaper values
0x17	Save shaper values
0x18	Software Trigger
0x19 ... 0xFF	Reserved

4.1.3.1 Write equipment address

This command allows configuring equipment address. To do this the address is 0x00.

Query:

LEN	ADD	CMD	DATA0	CHK
0x05	0x00	0x00	U08_ADD	CHK

With:

U08_ADD : Equipment address

Response:

LEN	STS	CHK
0x03	0x00	CHK

4.1.3.2 Read equipment address

This command allows reading equipment address. To do this the address is 0x00.

Query:

LEN	ADD	CMD	CHK
0x04	0x00	0x01	CHK

Response:

LEN	STS	DATA0	CHK
0x04	0x00	U08_ADD	CHK

With:

U08_ADD : Equipment address

4.1.3.3 Read protocol version

This command is used for reading the protocol version of communication. The format is X.Y.

Query:

LEN	ADD	CMD	CHK
0x04	ADD	0x02	CHK

Response:

LEN	STS	DATA0	DATA1	CHK
0x05	0x00	U08_X	U08_Y	CHK

With

U08_X : Major number version

U08_Y : Minor number version

4.1.3.4 Read error code

This command allows reading the last communication error.

Query:

LEN	ADD	CMD	CHK
0x04	ADD	0x03	CHK

Response:

LEN	STS	DATA0	DATA1	CHK

0x05	0x00	U08_MODULEID	U08_ERRORID	CHK
-------------	-------------	---------------------	--------------------	------------

With:

U08_MODULEID : Number of the failed unit

U08_ERRORID : Error number

4.1.3.5 Write instruction

This command allows writing an instruction in volatile memory. This instruction will be effective only after calling the apply request (Apply all instructions).

Query:

LEN	ADD	CMD	DATA0	DATA1	DATA2	...	DATAN	CHK
0x06+N	ADD	0x10	U16_CONSIGNEID	XNN_VALUE				CHK

With:

U16_CONSIGNEID : ID of the instruction

XNN_VALUE : Value of the instruction (format depends on instruction)

Response:

LEN	STS	CHK
0x03	0x00	CHK

4.1.3.6 Read instruction

This command allows reading an instruction in volatile memory.

Query:

LEN	ADD	CMD	DATA0	DATA1	CHK
0x06	ADD	0x11	U16_CONSIGNEID		CHK

With:

U16_CONSIGNEID : ID of the instruction

Response:

LEN	STS	DATA0	...	DATAN	CHK
0x03+N	0x00	XNN_VALUE			CHK

With:

XNN_VALUE : Value of the instruction (format depends on instruction)

4.1.3.7 Apply all instructions

This command applies all configured instructions.

Query:

LEN		ADD	CMD	CHK
0x04		ADD	0x12	CHK

Response:

LEN	STS	CHK
0x03	0x00	CHK

4.1.3.8 Save instructions

This command saves all instructions. The saved instructions will then be loaded and apply at each boot of the product.

Query:

LEN	ADD	CMD	CHK
0x04	ADD	0x13	CHK

Response:

LEN	STS	CHK
0x03	0x00	CHK

4.1.3.9 Read measure

This command allows reading a measure.

Query:

LEN	ADD	CMD	DATA0	DATA1	CHK
0x06	ADD	0x14	U16_MESUREID		CHK

With:

U16_MESUREID: ID of the measure

Response:

LEN	STS	DATA0	...	DATAN	CHK
0x03+N	0x00	XNN_VALUE			CHK

With:

XNN_VALUE : Value of the instruction (format depends on instruction)

4.1.3.10 Write shaper values

This command writes shaper values.

Query:

LEN	ADD	CMD	DATA0	DATA1	DATA2	DATA3	...	DATA N	CHK
0x07+N	ADD	0x16	U08_ID	U16_OFFSET		PU16_VALUE[120]			CHK

With:

U08_ID : ID of the shaper (0 to 3)

U16_OFFSET : Offset for the first value

PU16_VALUE[120] : Values between 0 and 4095. Maximal number of values is 120.

Response:

LEN	STS	CHK
0x03	0x00	CHK

4.1.3.11 Save shaper values

This command saves all shaper values into nonvolatile memory.

Query:

LEN	ADD	CMD	CHK
0x04	ADD	0x17	CHK

Response:

LEN	STS	CHK
0x03	0x00	CHK

4.1.3.12 Software trigger

This command send a gate trigger when the gate control is in burstSerial mode.

Query:

LEN	ADD	CMD	CHK
0x04	ADD	0x18	CHK

Response:

LEN	STS	CHK
0x03	0x00	CHK

4.2 List of Instructions and measures

4.2.1 Instructions

Consigne	Description	Unité	Format	Défaut	Min	Max
10	Functioning Mode 0 : None 1 : Divider 2 : Pulse-picker 3 : Pulse generator 4 : Pulse shape - Divider 5 : Pulse shape – Picker 6 : Pulse shape – Generator 7 : High 8 : Sync (mode direct)	-	U08	0	0	8
11	PulseIn Threshold	V	F32	0	0	5

4.0 – REMOTE COMMUNICATION

<i>Consigne</i>	<i>Description</i>	<i>Unité</i>	<i>Format</i>	<i>Défaut</i>	<i>Min</i>	<i>Max</i>
12	PulseIn Delay	ps	U32	0	0	10000
13	PulseIn Source 0 : Direct 1 : Daisy SyncIn 2 : Intern 3 : Photodiode	-	U08	0	0	3
15	PulseIn Frequency Divisor	-	U32	1	1	1 ^{E9}
16	PulseOut Delay	0.1ns	U64	0	0	50*2 ^{E60} - 1
17	PulseOut Width	ns	U64	5	5	5*2 ^{E60} - 1
18	Burst Size	-	U32	1	1	1 ^{E9}
19	Trigger Source 0 : Int 1 : Ext	-	U08	0	0	1
20	Synchro Internal Trigger Frequency	Hz	U32	100.1 ^{E3}	1	200.1 ^{E6}
21	SyncOut Source 0 : Sync 1 : Trigger 2 : Delay 3 : PulseOut	-	U08	0	0	3
22	Gate Control 0 : NoGate 1 : Gate 2 : BurstGate 3 : BurstSerial	-	U08	0	0	3
23	SyncOut2 Source 0 : Pulse direct 1 : Null	-	U08	0	0	1
24	PulseOut Inversion - 0 : positive logic - 1 : negative logique	-	U08	0	0	1
28	External Gate Source - 0 : GATE_EXT - 1 : Daisy_SyncIn2	-	U08	0	0	1
30	Shape1 : steps number	-	U16	1	1	4000
31	Shape1 : step size	-	U16	1	1	4000
32	Shape2 : steps number	-	U16	1	1	4000
33	Shape2 : step size	-	U16	1	1	4000
34	Shape3 : steps number	-	U16	1	1	4000
35	Shape3 : step size	-	U16	1	1	4000
36	Shape4 : steps number	-	U16	1	1	4000
37	Shape4 : step size	-	U16	1	1	4000
38	Default Offset	-	U16	0	0	4095

4.2.2 Measures

<i>Mesure</i>	<i>Description</i>	<i>Unité</i>	<i>Format</i>
0	PULSE_IN frequency	Hz	U32

1	SYNC_EXT frequency	Hz	U32
---	--------------------	----	-----

4.3 Example

Give Address 1 to the product: \$05\$00\$00\$01\$03

Check by reading the address: \$04\$00\$01\$04

Set functioning mode to divider:\$07\$01\$10\$00\$0A\$01\$1C\$

Apply: \$04\$01\$12\$16