

CC-M

High power laser diode driver 36V/21A



AeroDiODE

CCM

High Power Laser Diode Driver (36 V/21 A)

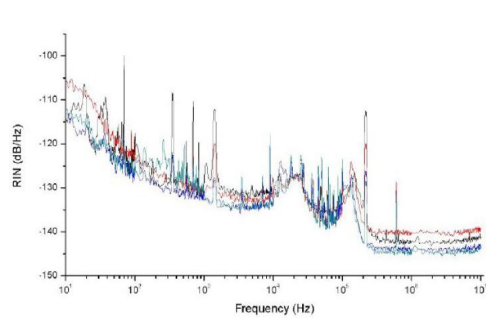
A module to drive the current and control the temperature of high-brightness laser diodes up to 150 W.



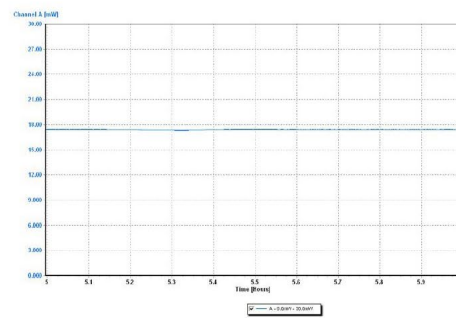
This high power laser diode driver allows to control external single or multiple element laser diodes up to 36 V - 21 Amps. Several laser diodes can be mounted in series on a single module. The laser diodes can be stabilized in either ACC (Automatic Current Control) or APC (Automatic Power Control using an external photodiode signal).

Key features:

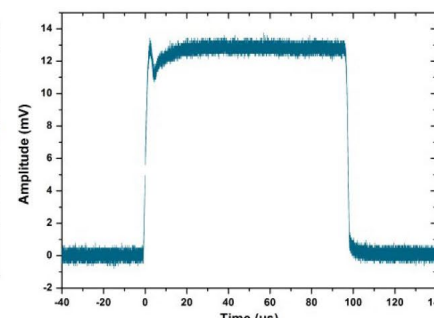
- Compatible with multiple elements laser diodes like II-VI, NLight, IPG, Lumentum, Dilas etc.
- Drives laser diodes up to 36 V - 21 A
- Ultra-stable laser power for short and long term operation
- More than 150 W CW power with new generation laser diodes
- Max modulation frequency : 100 kHz
- Highly efficient (> 80 % from plug)
- Smart control (USB interface to drive simultaneously several modules from ALPhANOV's laser electronics series)



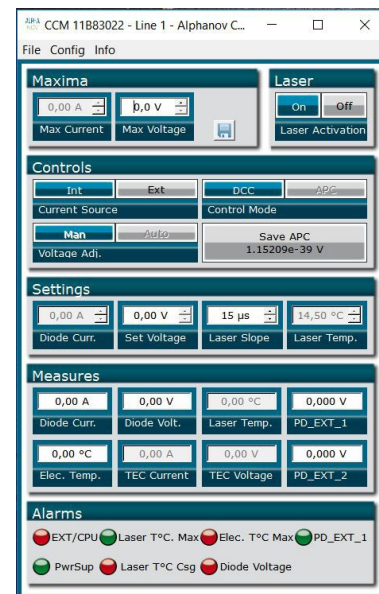
Extremely low noise



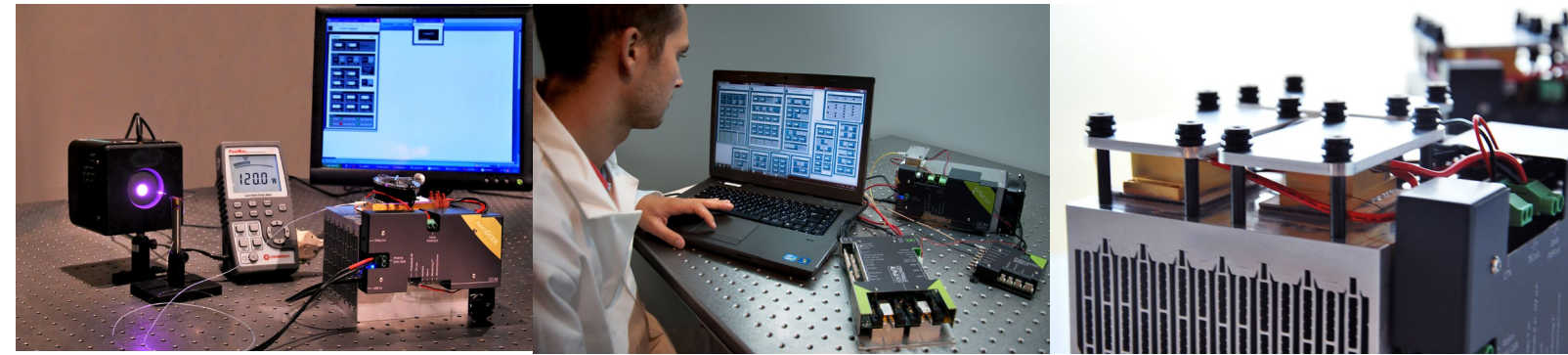
Ultra-stable laser power



Rise time



Technical Specifications



Electronic and Optical

	CCM	New: CCM-HP
Output current	0 - 13 A	0 - 21 A
Output voltage (laser diode dependant)	0 - 23 V	0 - 36 V
Laser diode package temp. regulation	15 - 40 °C	
Temperature stability (integration dependant)	10 mK	
Low power adjustment precision	0.05 A	
Laser power stability	< 0.05 %	
Max modulation rate	100 kHz	
Compatibility & Libraries	Windows 7/Windows 10 / DLLs / Hexa / LabVIEW	
Interface	USB / UART	
Power supply	24 V	
Dimensions (mm)	238 * 119 * 112	238 * 146 * 142.5

Subject to change without notice



AeroDiODE

Institut d'optique d'Aquitaine
Rue François Mitterrand
33400 Talence - France

Ph. +33 (0)6 27 69 41 52
www.aerodiode.com